

CoVi EVQ-3000™ Series Mini-Dome Camera



See the High Definition Difference

The CoVi EVQ-3000 Series of Mini-Domes is the first high-definition (HD) video surveillance camera to deliver crisp, clear, multiple views for maximum security. Designed for both analog and hybrid infrastructures, the EVQ-3000 Series can capture the highest resolution video, while enabling navigation of select zoomed areas of interest to capture the critical images other cameras miss.

Dual video outputs with one-of-a-kind MultiView™ and ePTZ formats provide situational awareness and critical tracking capabilities in one camera.

This superior quality not only delivers critical evidentiary information, but also improves and extends the area of coverage, expedites investigations, resolves complaints and reduces operational costs.



Photo A

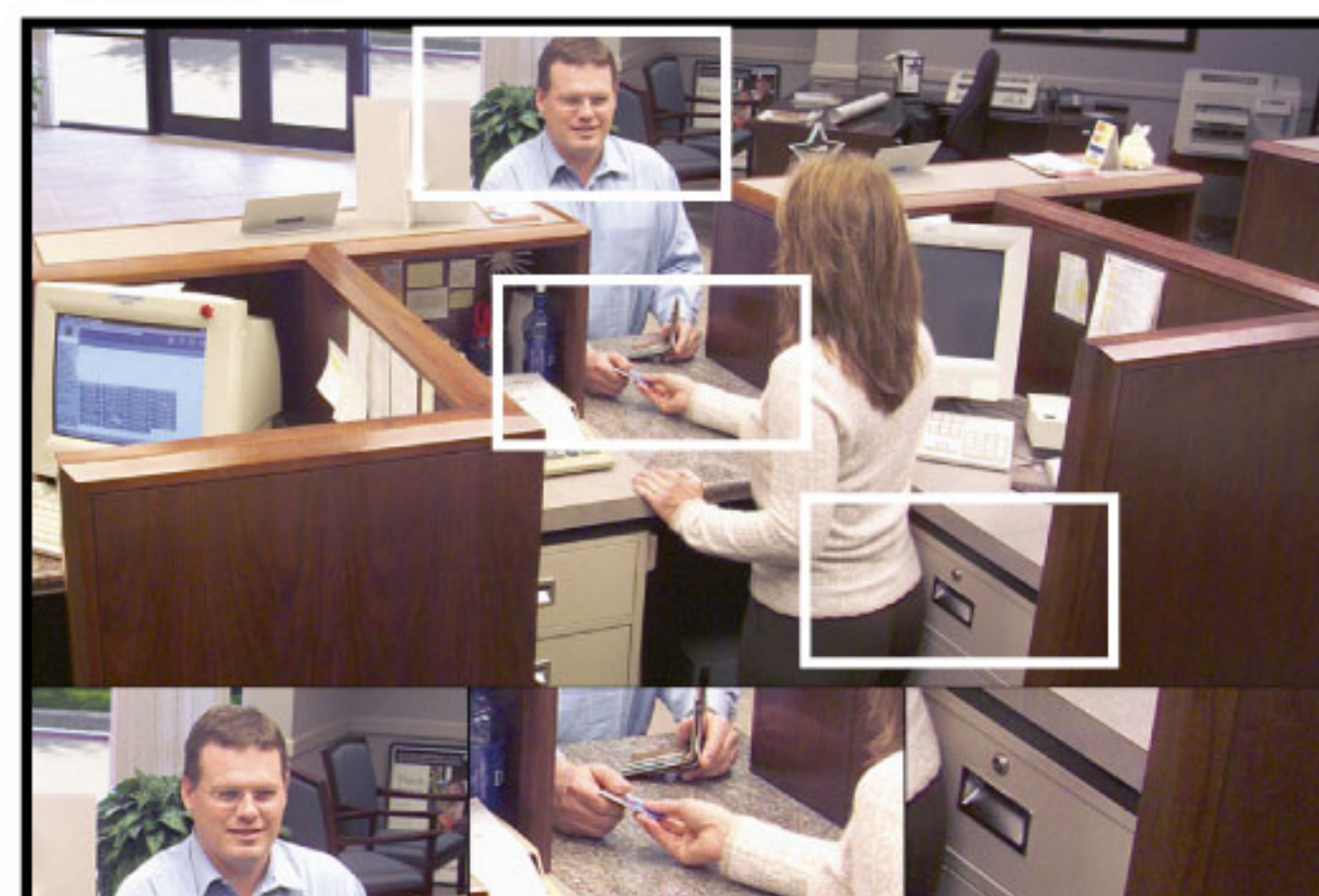
Photo for illustrative purposes only.

Industry First Features

The unique design of the EVQ-3000 and use of a high definition 1280 x 720 image sensor, allows for single or dual video output configuration. This Dual Output Display allows you to investigate scenes by enlarging ZUP (Zoom-Under-Picture) images on a second monitor.

Combining high dynamic range with excellent low light and progressive scan low light capabilities, the CoVi EVQ-3000 allows you to see all the details that you have previously missed.

Photo B



ZUP1

ZUP2

ZUP3



ePTZ

Photo C

MultiView™ and ZUP's

The CoVi patent-pending MultiView feature provides a unique widescreen view of a designated scene, plus up to three additional (ZUP) views.

The MultiView output provides a wide Field of View for situational awareness. Unmatched identification and assessment capability is provided by up to 3 ZUPs assigned to critical areas of interest within the wide field of view (see photos A,B).

- Capture greater details with highest resolution analog video in the industry
- Wider field of view provides greater coverage
- Situational Awareness and Forensic Identification in a single camera
- Digital Day/Night feature enables monochrome imaging in low light
- High Dynamic Range compensates for difficult and high contrast lighting environments
- Discrete and Vandal resistant form factors
- Easy setup and configuration with on-board video and RS485 ports
- Single and Dual Video Output Options

ePTZ

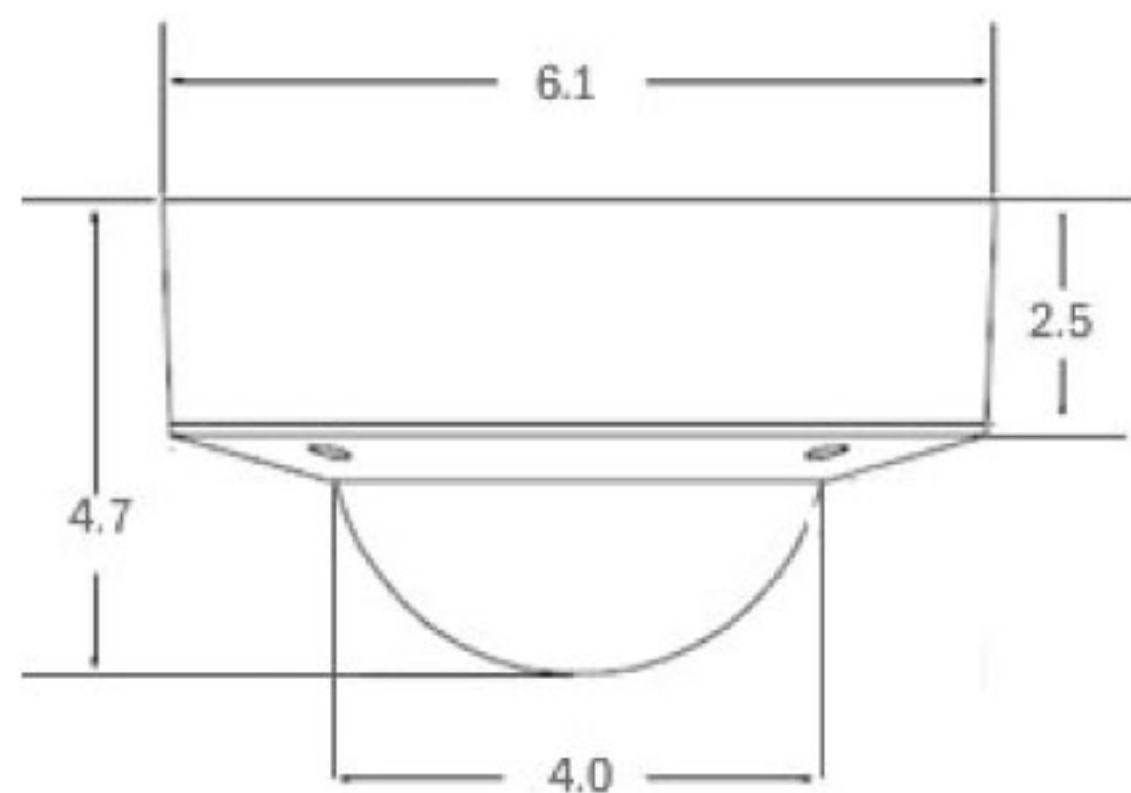
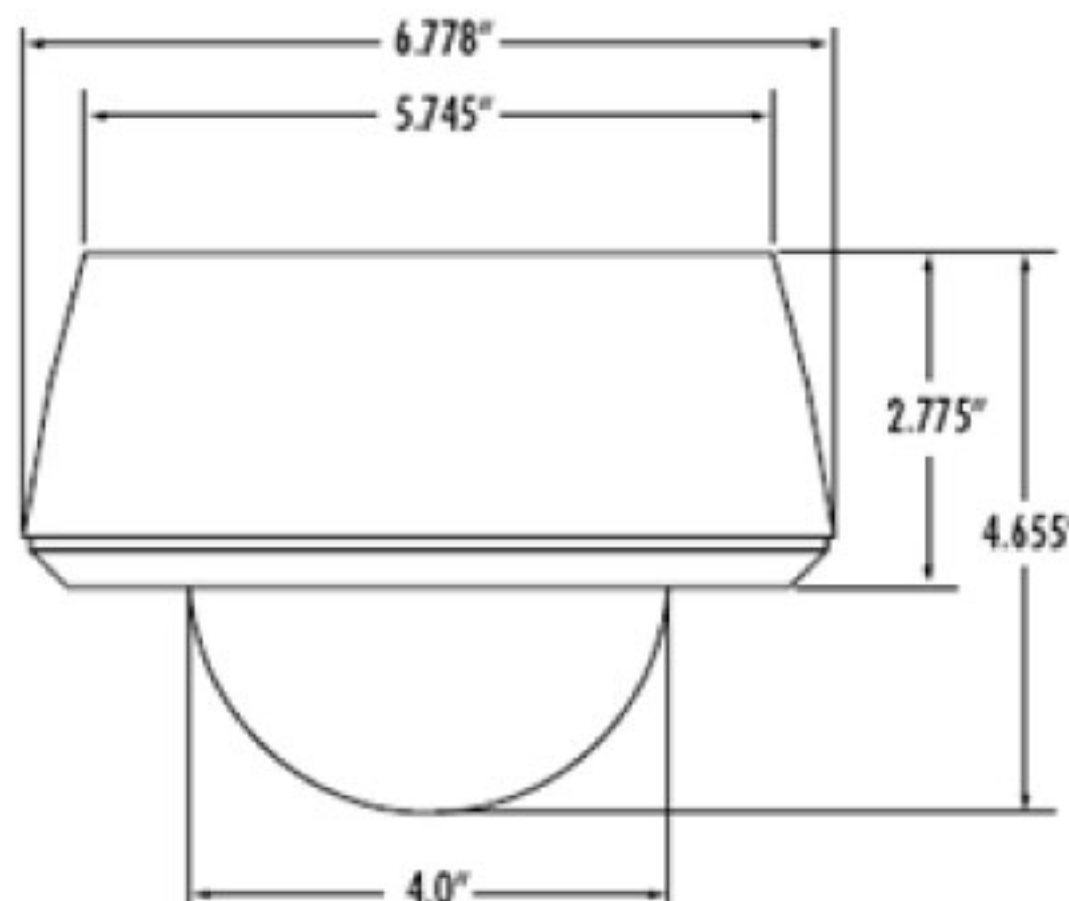
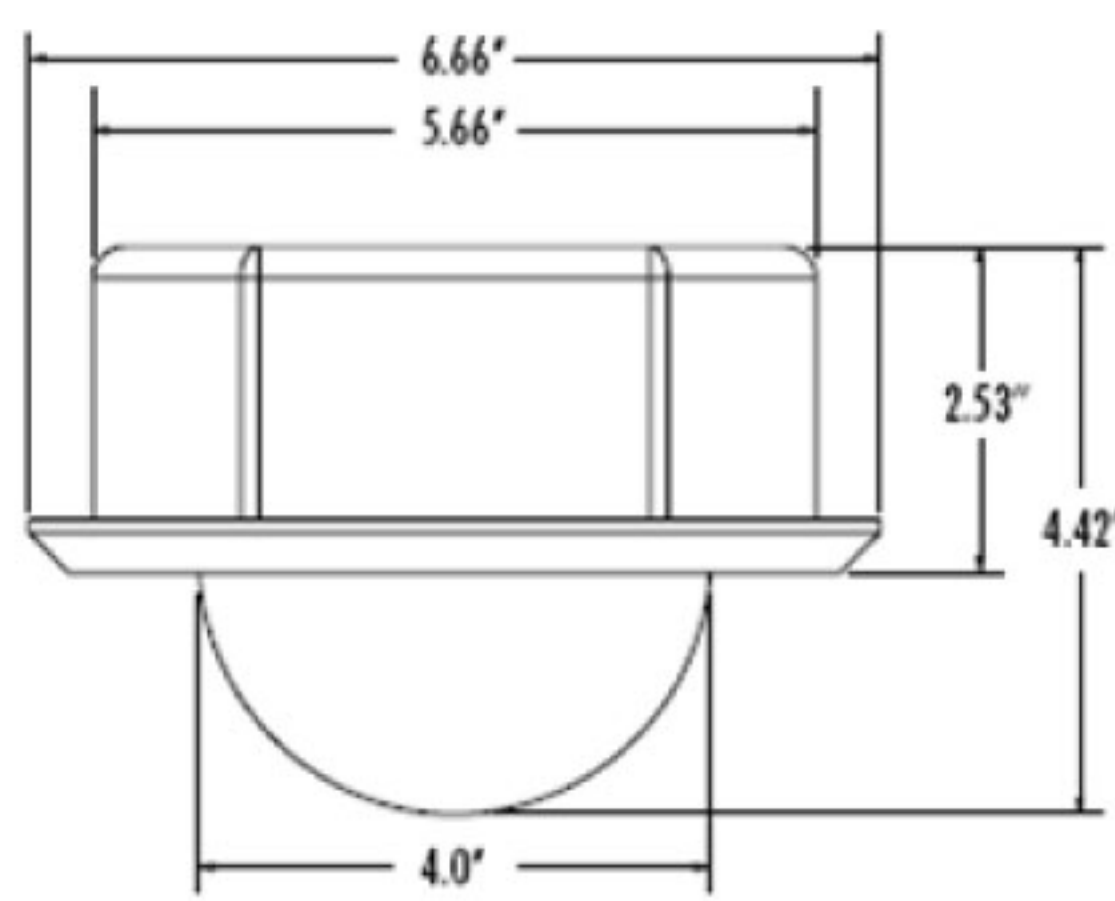
CoVi's unique Electronic Pan Tilt Zoom (ePTZ) feature emulates traditional pan, tilt, zoom capabilities, within the wide FOV main image.

The ePTZ output is extracted from the High-Definition sensor enabling critical tracking, identification and assessment of a subject or scene by the operator.

The ePTZ design provides 4x visually lossless zoom with a total of 16x digital zoom allowing the operator to track, assess and capture video without moving parts (see photo C). The end result is reduced camera footprint, lower installation and product costs and effective elimination of frequent maintenance costs typically associated with mechanical PTZ cameras.



TECHNICAL SPECIFICATIONS



CAMERA	FLUSH MOUNT	SURFACE MOUNT	VANDAL MOUNT
Image Sensor	1280V x 720H	1280V x 720H	1280V x 720H Resistant
Scanning System	Progressive Scan	Progressive Scan	Progressive Scan
Video Format	NTSC, PAL selectable	NTSC, PAL selectable	NTSC, PAL selectable
Video Output (BNC)	1 or 2 outputs	1 or 2 outputs	1 or 2 outputs
Dynamic Range	120 dB	120 dB	120 dB
S/N Ratio	> 55 dB	> 55 dB	> 55 dB
Minimum Illumination	0.1 Lux	0.1 Lux	0.1 Lux
White Balance	Auto	Auto	Auto
On Board RS485 (setup)	2.5mm phono jack	2.5mm phono jack	2.5mm phono jack
On Board Video (setup)	RCA connector	RCA connector	RCA connector
MEGAPIXEL VF LENS			
4.5-10mm Horizontal FOV	62-30°	62-30°	62-30°
10-16mm Horizontal FOV	30-18°	30-18°	30-18°
ELECTRICAL			
Voltage	24VAC, 12VDC auto-sensing	24VAC, 12VDC auto-sensing	24VAC, 12VDC auto-sensing
Power Consumption	8W	8W	8W
MECHANICAL			
Physical Dimensions	see photo	see photo	see photo
Bracket Pan (X)	370°	370°	370°
Tilt (Y)	90°	90°	90°
Rotation (Z)	90°	90°	90°
Base Enclosure	Plenum, drawn steel	Plenum, drawn steel	Cast Aluminum
Dome Bubble	4", Polycarbonate	4", Polycarbonate	4", Polycarbonate
Trim Ring	ABS White	ABS White	Cast Aluminum, Beige
Cable Entry	1/2" conduit, TOP	1/2" conduit, TOP	1/2" conduit, SIDE & TOP
Shipping Weight	4.1lbs, 1.9kg	4.5lbs, 2.0kg	5.8lbs, 2.6kg
Operating Environment	Indoor	Indoor	Indoor/Outdoor (NEMA4, IP66)
Operating Temperature	0-50° C	0-50° C	0-50° C

