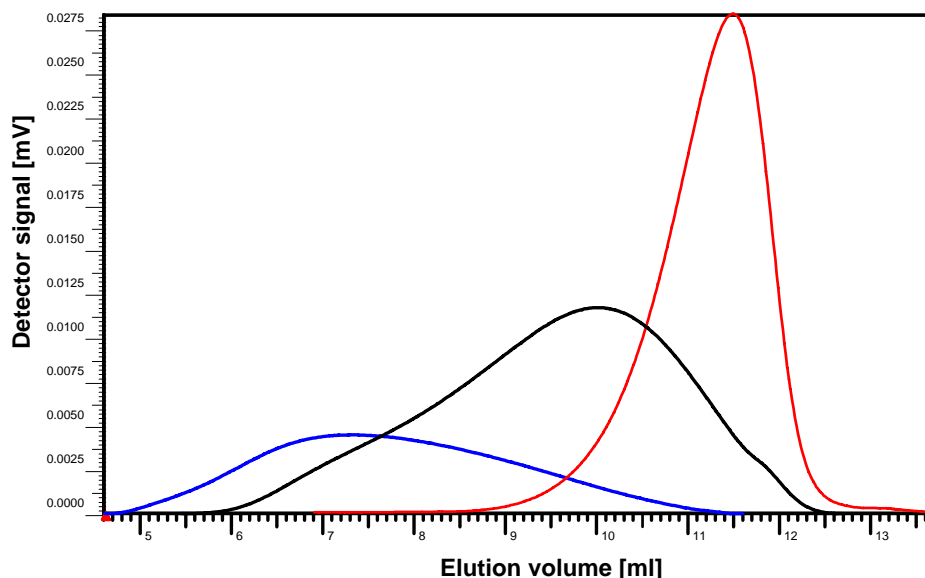


NOVEMA columns

GPC of Polycations



Quality control from three different Chitosan samples with molar masses between 10.000 D and 1 Mil. D on PSS NOVEMA column 3000Å 10µm 8x300mm in 0.2 % Trifluoroacetic acid. Flow rate: 1 ml/min, 25°C; Detection: RI

Application:

Operational area:

PSS NOVEMA is the ideal GPC column for the analysis of polycations in aqueous eluents (buffer systems). By the interaction-free chromatography (also without organic modifier) the column is ideally suitable for the GPC - Light Scattering- and GPC - Viscometrie-coupling. PSS NOVEMA columns carry no free charges on the surface and show therefore negligible adsorption.

Polymers:

Polycations and related copolymers, Chitosanes, Alginates, quaternated Poly(vinylpyridine), PolyDADMAC

Solvent:

Suitable for aqueous eluents with salt or trifluoroacetic acid additive.

Advantages:

Separation power:

Selected pore size distributions between 30Å and 30000Å permit an optimal separation for oligomers and high-molecular polymers. PSS NOVEMA can be used as single column or in a column combination.

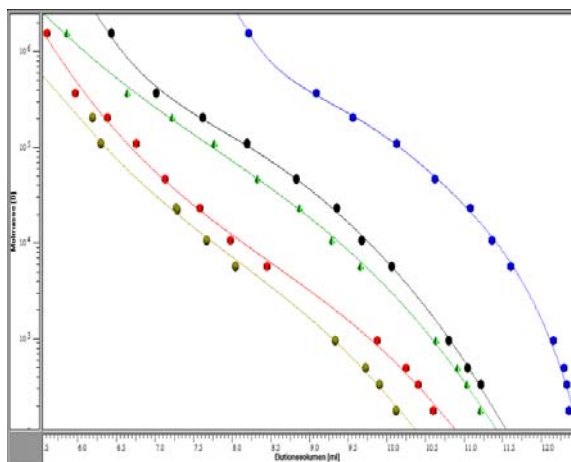
Separation range:

A separation range between 100 and more than 5 Mil. D can be covered by a mismatch-free combination of different porosities.

Stability:

PSS NOVEMA columns contain polymeric spherical particles with close particle size distribution. From this a high mechanical stability of the column bed results with, at the same time, small counter-pressures. Furthermore PSS NOVEMA gels prove to be chemically inert within the pH range of 1-12 due to their manufacturing process.

Calibration curve



Calibration curves with PSS NOVEMA 30Å, 300Å, 1.000Å, 3.000Å, 10.000Å (from bottom to top); calibration with Pullulan in 0,05% NaN₃

Advantages of all PSS Columns

- 20 years expertise in polymer separations
- Column selection for special applications
- Consultance for separation problems
- Possibility for batch to batch guarantee
- Special column gel for your need
- Comes with optimum column connection, free of charge
- Quality check with a test polymer according certificate
- Refill-Service
- Application database:
Please visit our homepage where you can find a lot of applications.
Just enter: www.polymer.de

Specification

Molecular weight range	100 - >5 x 10 ⁶ D (related to Pullulan)
Maximum pressure	45 up to 150 bar (depending on porosity)
Temperature range	room temperature up to 80 °C
Flow rate (analytical)	0.1 to 3 ml/min (depending on temperature)
Recommended flow rate	1ml/min
Resolution (depending on experimental conditions)	R _{sp} > 2,5
plate number (depending on experimental conditions)	> 35.000/m
Particle size	10 µm
Column types	Analytical, HighSpeed, Preparative, Micro
Eluents	aqueous buffer

Separation range

Porosity	Separation range / Linearity		
30Å	100	-	3 x 10 ⁴ D
300Å	100	-	2,5 x 10 ⁵ D
1000Å	1.000	-	1 x 10 ⁶ D
3000Å	1.000	-	> 1,6 x 10 ⁶ D
10000Å	5.000	-	> 5 x 10 ⁶ D
linear	500	-	5 x 10 ⁵ D
	Precolumn		