

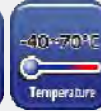


## RGS-P9000 Series

Industrial modular rack mount managed Gigabit Ethernet switch with 4 slots

### Features

- Modular designed makes network planning easy
- Supports O-Ring (recovery time < 30ms over 250 units of connection) and MSTP (RSTP/STP compatible) for Ethernet Redundancy
- Open-Ring support the other vendor's ring technology in open architecture
- O-Chain allow multiple redundant network rings
- Support standard IEC 62439-2 MRP (Media Redundancy Protocol) function
- Support IEEE 1588v2 clock Synchronization
- Supports IPv6 new internet protocol version
- Support Modbus TCP protocol
- Provided HTTPS/SSH protocol to enhance network security
- Support IEEE 802.3az Energy-Efficient Ethernet technology
- Supports SMTP client
- Supports IP-based bandwidth management
- Supports application-based QoS management
- Supports Device Binding security function
- Supports DOS/DDOS auto prevention
- IGMP v2/v3 (IGMP snooping support) for filtering multicast traffic
- Supports SNMP v1/v2c/v3 & RMON & 802.1Q VLAN Network Management
- Support ACL, TACACS+ and 802.1x User Authentication for security
- Supports 10K Bytes Jumbo Frame
- Multiple notification for warning of unexpected event
- Web-based ,Telnet, Console (CLI), and Windows utility (Open-Vision) configuration
- Support LLDP Protocol
- Supports redundant power inputs with optional voltage range
- 19 inches rack mountable design



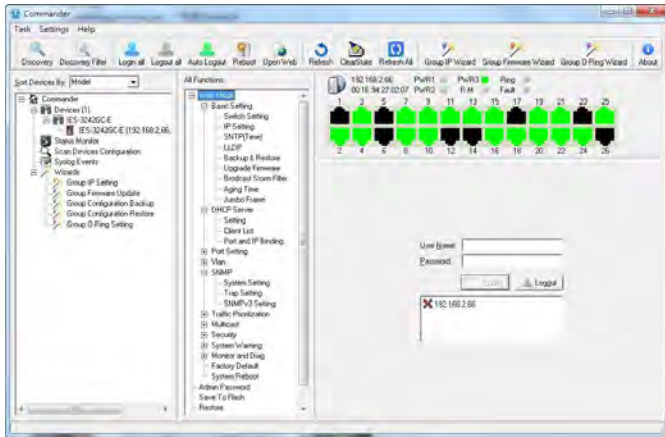
### Introduction

RGS-P9000 is modular managed redundant ring Ethernet switch with 4 slots. With completely support of Ethernet Redundancy protocol, O-Ring (recovery time < 30ms over 250 units of connection) and MSTP (RSTP/STP compatible) can protect your mission-critical applications from network interruptions or temporary malfunctions with its fast recovery technology. And support wide operating temperature from -40 °C to 70 °C (If use 10G SFP module then operating temperature is -20 °C ~ 60 °C). RGS-P9000 can also be managed centralized and convenient by Open-Vision, Except the Web-based interface, Telnet and console (CLI) configuration. Therefore, the switch is one of the most reliable choice for highly-managed and Fiber Ethernet power substation and rolling stock application.

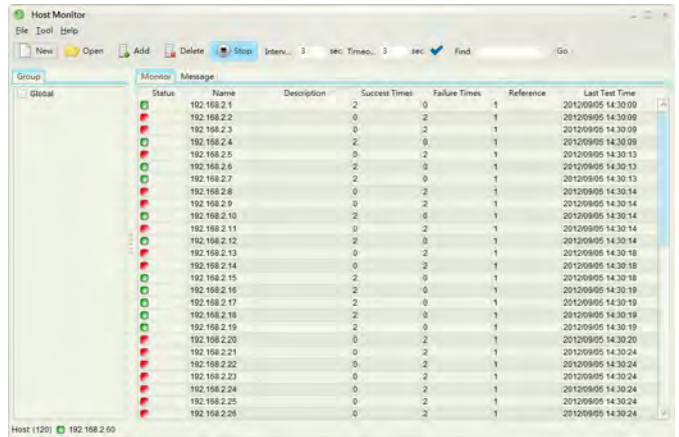


## Open-Vision

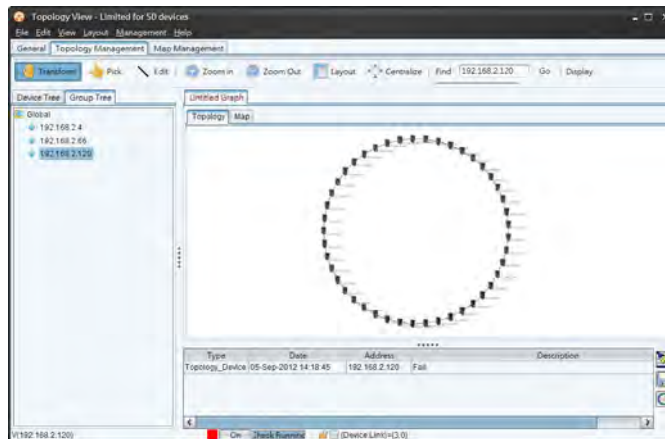
ORing's switches are intelligent switches. Different from other traditional redundant switches, ORing provides a set of Windows utility (Open-Vision) for user to manage and monitor all of industrial Ethernet switches on the industrial network.



Commander

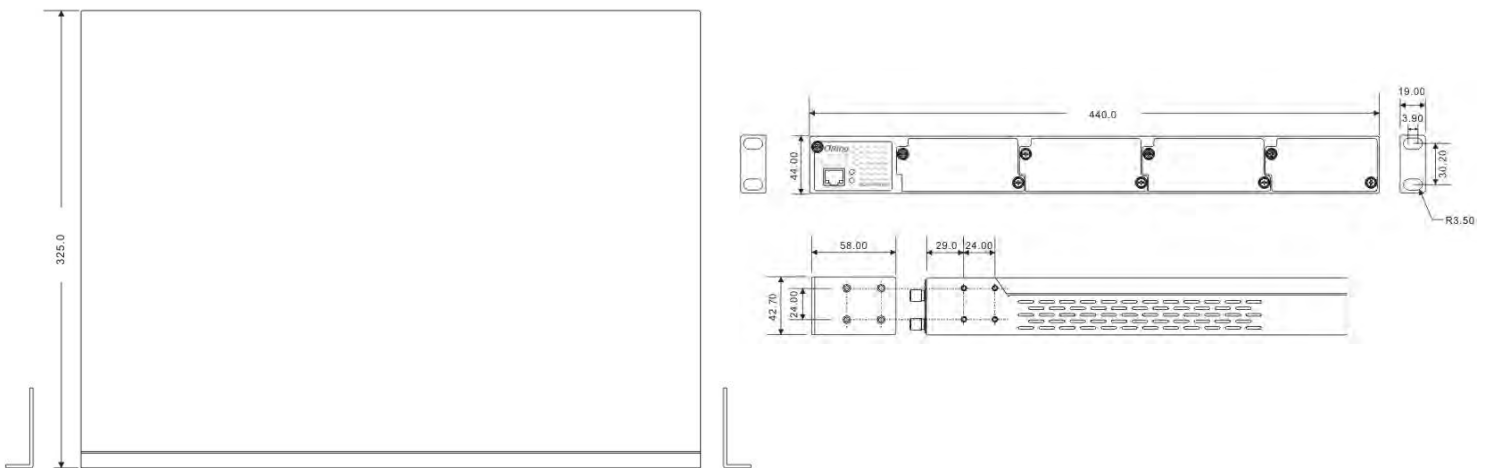


Host Monitor



Topology View

## Dimension



\* All specifications are subject to change without notice.

## Specifications

ORing Switch Model	RGS-P9000-LV	RGS-P9000-HV
<b>Physical Ports</b>		
Slot Number	4 (up to 3 slots for 8x1G ports and 1 slot for 4x10G port)	
<b>Technology</b>		
Ethernet Standards	IEEE 802.3 for 10Base-T IEEE 802.3u for 100Base-TX and 100Base-FX IEEE 802.3ab for 1000Base-T IEEE 802.z for 1000Base-X IEEE 802.3ae for 10Gigabit Ethernet IEEE 802.3x for Flow control IEEE 802.3ad for LACP (Link Aggregation Control Protocol ) IEEE 802.1p for COS (Class of Service) IEEE 802.1Q for VLAN Tagging IEEE 802.1w for RSTP (Rapid Spanning Tree Protocol) IEEE 802.1s for MSTP (Multiple Spanning Tree Protocol) IEEE 802.1x for Authentication IEEE 802.1AB for LLDP (Link Layer Discovery Protocol)	
MAC Table	8k	
Priority Queues	8	
Processing	Store-and-Forward	
Switch Properties	Switching latency: 7 us Switching bandwidth: 128Gbps Max. Number of Available VLANs: 256 IGMP multicast groups: 128 for each VLAN Port rate limiting: User Define	
Jumbo frame	Up to 10K Bytes	
Security Features	Device Binding security feature Enable/disable ports, MAC based port security Port based network access control (802.1x) Single 802.1x and Multiple 802.1x MAC-based authentication QoS assignment Guest VLAN MAC address limit TACACS+ VLAN (802.1Q ) to segregate and secure network traffic Radius centralized password management SNMPv3 encrypted authentication and access security Https / SSH enhance network security Web and CLI authentication and authorization Authorization (15 levels) IP source guard	
Software Features	IEEE 1588v2 clock synchronization IEEE 802.1D Bridge, auto MAC address learning/aging and MAC address (static) Multiple Registration Protocol (MRP) MSTP (RSTP/STP compatible) Redundant Ring (O-Ring) with recovery time less than 30ms over 250 units TOS/Diffserv supported Quality of Service (802.1p) for real-time traffic VLAN (802.1Q) with VLAN tagging IGMP v2/v3 Snooping IP-based bandwidth management Application-based QoS management DOS/DDOS auto prevention Port configuration, status, statistics, monitoring, security DHCP Server/Client DHCP Relay Modbus TCP DNS client proxy SMTP Client Modbus TCP	
Network Redundancy	O-Ring Open-Ring	

	O-Chain MRP MSTP (RSTP/STP compatible)	
RS-232 Serial Console Port	RS-232 in RJ-45 connector with console cable. 115200bps, 8, N, 1	
<b>LED Indicators</b>		
System Ready Indicator (PWR)	Green : Indicates that the system ready. The LED is blinking when the system is upgrading firmware	
Power Indicator (PWR1 / PWR2)	Green : Power LED x 2	
Ring Master Indicator (R.M.)	Green : Indicates that the system is operating in O-Ring Master mode	
O-Ring Indicator (Ring)	Green : Indicates that the system operating in O-Ring mode Green Blinking : Indicates that the Ring is broken.	
Fault Indicator (Fault)	Amber : Indicate unexpected event occurred	
Reset To Default Running Indicator (DEF)	Green : System resets to default configuration	
Supervisor Login Indicator (RMT)	Green : System is accessed remotely	
Smart LED Display system	Link/Act(LK/ACT) / Speed(SPD) / Duplex(FDX) / Remote (RMT) green LED indicator x 4 Mode select Button (MODE) : Link/Act(LK/ACT) / Speed(SPD) / Duplex(FDX) / Remote (RMT) mode select button Port 1 ~ 28 Link/Act(LK/ACT) LED show : Green x 28	
<b>Fault Contact</b>		
Relay	Relay output to carry capacity of 1A at 24VDC	
<b>Power</b>		
Redundant power input modular	Dual 24/48VDC (20~72VDC) power inputs at terminal block	Dual 88~264VAC / 100~370VDC power inputs at terminal block
Power consumption (Typ.)	46Watts max.	43.5Watts max.
Overload current protection	Present	
<b>Physical Characteristic</b>		
Enclosure	19 inches rack mountable	
Weight (g)	6450g	6600g
Dimension (W x D x H)	440 (W) x 325 (D) x 44 (H) mm (17.32x12.8x1.73 inches)	
<b>Environmental</b>		
Storage Temperature	-40 to 85°C (-40 to 185°F)	
Operating Temperature	10G SFP+ module absent : -40 to 70°C (-40 to 158°F) 10G SFP+ module used: -20 to 60 °C (-4 to 140°F)	
Operating Humidity	5% to 95% Non-condensing	
<b>Regulatory Approvals</b>		
EMI	FCC Part 15, CISPR (EN55022) class A, EN50155 (EN50121-3-2, EN55011, EN50121-4)	
EMS	EN61000-4-2 (ESD) EN61000-4-3 (RS), EN61000-4-4 (EFT), EN61000-4-5 (Surge), EN61000-4-6 (CS), EN61000-4-8, EN61000-4-11	
Warranty	5 years	

## Ordering Information

	Model Name	Description
Available Model	RGS-P9000-LV	Industrial modular rack mount managed Gigabit Ethernet switch with 4 slots, low-voltage power input
	RGS-P9000-HV_US	Industrial modular rack mount managed Gigabit Ethernet switch with 4 slots, high-voltage power input, US power cord
	RGS-P9000-HV_EU	Industrial modular rack mount managed Gigabit Ethernet switch with 4 slots, high-voltage power input, EU power cord

## Packing List

- RGS-P9000 x 1
- Rack-mount Kit x 1
- ORing Tool CD x 1
- Console Cable x 1
- Quick Installation Guide x 1

## Optional Accessories

- Open-Vision M500 : Powerful Network Management Windows Utility Suit, 500 IP devices
- SFP100 series : 100Mbps SFP optical transceiver
- SFP 1G series : 1Gbps SFP optical transceiver
- SFP 10G series : 10Gbps SFP optical transceiver
- DR-75 series : 75 Watts DIN-Rail power supply
- DR-120 series : 120 Watts DIN-Rail power supply

## Optional Module



For 10G slot:

### SWM-02GP+

Industrial 2-port 10G SFP+ module with 2x10GBase-X, SFP+ socket



For 10G slot:

### SWM-04GP+

Industrial 4-port 10G SFP+ module with 4x10GBase-X SFP+ ports





For 1G slot:

**SWM-80GT**

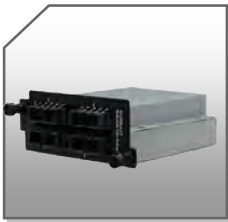
Industrial 8-port Gigabit Ethernet switch module with 8x10/100/1000Base-T(X) ports



For 1G slot:

**SWM-08GP**

Industrial 8-port Gigabit fiber module with 8x100/1000Base-X, SFP socket



For 1G slot:

**SWM-04GF-MM/SS-SC**

Industrial 4-port Gigabit fiber module with 4x1000Base-FX SC Fiber ports



For 1G slot:

**SWM-04FX-MM/SS-SC**

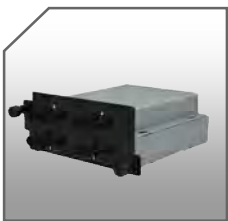
Industrial 4-port fiber module with 4x100Base-FX SC Fiber ports



For 1G slot:

**SWM-04GF-MM/SS-ST**

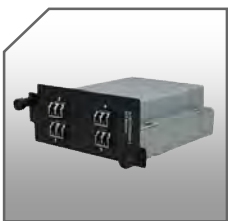
Industrial 4-port Gigabit fiber module with 4x1000Base-FX ST Fiber ports



For 1G slot:

**SWM-04FX-MM/SS-ST**

Industrial 4-port fiber module with 4x100Base-FX ST Fiber ports



For 1G slot:

**SWM-04GF-MM/SS-LC**

Industrial 4-port Gigabit fiber module with 4x1000Base-FX LC Fiber ports



For 1G slot:

**SWM-04FX-MM/SS-LC**

Industrial 4-port fiber module with 4x100Base-FX LC Fiber ports