

# KEL 24

## Cable entry frames



V2A  
anti-corrosive

KEL 24 also available with V2A screws.



KEL on request also available with threaded bushings.\*

1

## Product description

The KEL 24 matches exactly the cut-out dimensions of 24-pole standard industrial connectors.

The split insert matching the cable diameter is placed around the cable and inserted into the cable entry frame.

Either a cut out of 36 mm or 46 mm tall can be chosen depending on the cables being routed. This flexibility is perfect for pre-terminated cables.

## Advantages

- Warranty of pre-terminated cables remains
- Retrofitting and maintenance can be carried out easily and quickly
- High packing density, wide variety of frames and inserts
- Strain relief according DIN EN 50262

## Specification

Material	Polyamide (PA)
Flame class	UL-94 Vo, self-extinguishing
Protection class	IP 54, with gasket and correct selection of the cable inserts
Temperature	- 40°C to + 140°C (static)
Properties	Halogen-free, silicone-free
Cut-out dimensions	36 x 112 mm / Page 146 - 147
Height KEL	17 mm

## Accessories

KT Cable inserts	Page 28 - 32
KEL-SNAP snap frames	Page 20
KEL-EMC Cable collector	Page 110 - 112
KDR2 KDR Base plates	Page 120 - 123
FP Flanged plates	Page 124 - 129
MP Module plates	Page 130 - 131

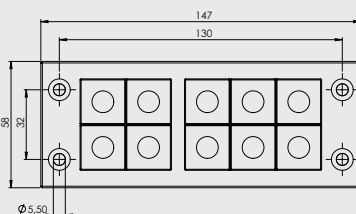
### Description

### Type

### Order No.

### Inserts KT small | large

### PU



KEL 24|10

42241

10|-

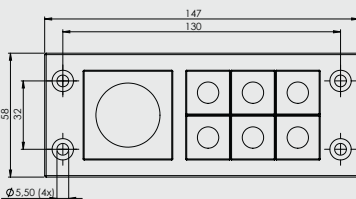
10

KEL 24|10  
with V2A screws

42241.200

10|-

10



KEL 24|7

42247

6|1

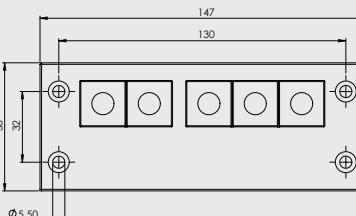
10

KEL 24|7  
with V2A screws

42247.200

6|1

10



KEL 24|5

42248

5|-

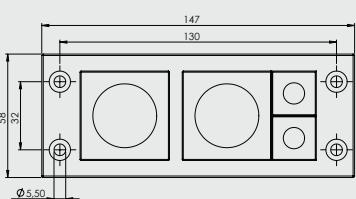
10

KEL 24|5  
with V2A screws

42248.200

5|-

10



KEL 24|4

42244

2|2

10

KEL 24|4  
with V2A screws

42244.200

2|2

10

\*Except KEL 183 / KEL JUMBO



# KEL-ER 24

## Cable entry frames

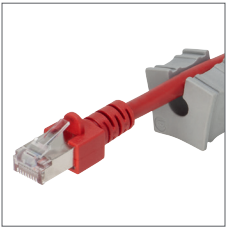


V2A anti-corrosive

KEL-ER also available with V2A screws.



KEL-ER on request also available with threaded bushings.



Split inserts

Type	Order No.	Inserts KT small   large	PU	Description
KEL-ER 24 10	48241	10 -	10	
KEL-ER 24 10 with V2A screws	48241.200	10 -	10	
KEL-ER 24 7	48247	6 1	10	
KEL-ER 24 7 with V2A screws	48247.200	6 1	10	
KEL-ER 24 4	48244	2 2	10	
KEL-ER 24 4 with V2A screws	48244.200	2 2	10	

### Product description

Split cable entry system for routing pre-terminated cables providing a protection class of IP 65. Routing, sealing and providing strain relief for cable diameters from 3 to 15 mm (KT small) and 16 to 34 mm (KT large). The new cable entry system is easy to install. Cable inserts are placed into compartments and are securely fixed to the frame during assembly. The KEL-ER 24 frame matches exactly the cut-out dimensions for 24-pole standard industrial connectors.

### Advantages

- Protection class IP65
- Warranty of pre-terminated cables remains
- Retrofitting and maintenance can be carried out easily and quickly
- High packing density, wide variety of frames and inserts
- Strain relief according DIN EN 50262
- Vibration proof

### Specification

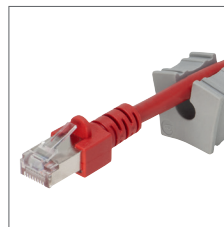
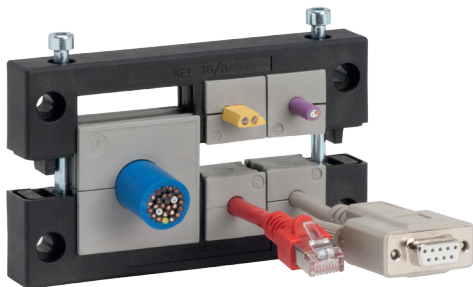
Material	Polyamide (PA)
Flame class	UL-94 Vo, self-extinguishing
Protection class	IP 65, with gasket and correct selection of the cable inserts
Temperature	- 40°C to + 140°C (static)
Properties	Halogen-free, silicone-free
Cut-out dimensions	36 x 112 mm / 46 x 46 mm / p. 146 - 147
Height KEL	17 mm

### Accessories

KT Cable inserts	Page 28 - 32
KEL-SNAP snap frames	Page 20
KEL-EMC Cable collector	Page 110 - 112
KDR2 KDR Base plates	Page 120 - 123
FP Flanged plates	Page 124 - 129
MP Module plates	Page 130 - 131

# KEL 16

## Cable entry frames



Split inserts



V2A  
anti-corrosive

KEL 16 also available with V2A screws.



KEL on request also available with threaded bushings.\*



1

## Product description

The KEL 16 matches exactly the cut-out dimensions of 16-pole standard industrial connectors.

The split insert matching the cable diameter is placed around the cable and inserted into the cable entry frame.

Either a cut out of 36 mm or 46 mm tall can be chosen depending on the cables being routed. This flexibility is perfect for pre-terminated cables.

## Advantages

- Warranty of pre-terminated cables remains
- Retrofitting and maintenance can be carried out easily and quickly
- High packing density, wide variety of frames and inserts
- Strain relief according DIN EN 50262

## Specification

Material	Polyamide (PA)
Flame class	UL-94 Vo, self-extinguishing
Protection class	IP 54, with gasket and correct selection of the cable inserts
Temperature	- 40°C to + 140°C (static)
Properties	Halogen-free, silicone-free
Cut-out dimensions	36 x 86 mm / Page 146 - 147
Height KEL	17 mm

## Accessories

KT Cable inserts	Page 28 - 32
KEL-SNAP snap frames	Page 20
KEL-EMC Cable collector	Page 110 - 112
KDR Base plates	Page 122 - 123
FP Flanged plates	Page 124 - 129

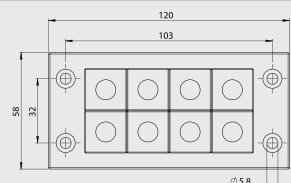
### Description

### Type

### Order No.

### Inserts KT small | large

### PU



KEL 16|8

42168

8|-

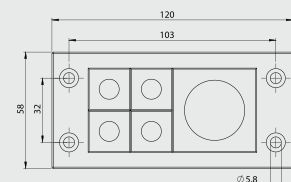
10

KEL 16|8  
with V2A screws

42168.200

8|-

10



KEL 16|5

42165

4|1

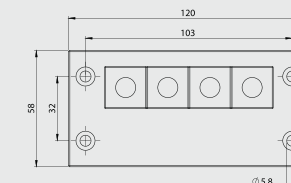
10

KEL 16|5  
with V2A screws

42165.200

4|1

10



KEL 16|4

42164

4|-

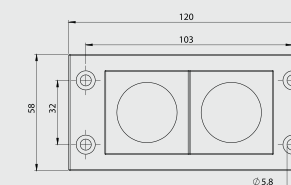
10

KEL 16|4  
with V2A screws

42164.200

4|-

10



KEL 16|2

42162

-|2

10

KEL 16|2  
with V2A screws

42162.200

-|2

10

\*Except KEL 183 / KEL JUMBO



# KEL-ER 16

## Cable entry frames



KEL-ER also available with V2A screws.



KEL-ER on request also available with threaded bushings.

Type	Order No.	Inserts KT small   large	PU	Description
------	-----------	-----------------------------	----	-------------

KEL-ER 16 8	48168	8 -	10	
KEL-ER 16 8 with V2A screws	48168.200	8 -	10	
KEL-ER 16 5	48165	4 1	10	
KEL-ER 16 5 with V2A screws	48165.200	4 1	10	
KEL-ER 16 2	48162	- 2	10	
KEL-ER 16 2 with V2A screws	48162.200	- 2	10	

### Product description

Split cable entry system for routing pre-terminated cables providing a protection class of IP 65. Routing, sealing and providing strain relief for cable diameters from 3 to 15 mm (KT small) and 16 to 34 mm (KT large). The new cable entry system is easy to install. Cable inserts are placed into compartments and are securely fixed to the frame during assembly. The KEL-ER 16 frame matches exactly the cut-out dimensions for 24-pole standard industrial connectors.

### Advantages

- Protection class IP65
- Warranty of pre-terminated cables remains
- Retrofitting and maintenance can be carried out easily and quickly
- High packing density, wide variety of frames and inserts
- Strain relief according DIN EN 50262
- Vibration proof

### Specification

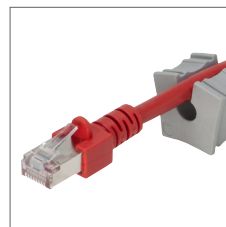
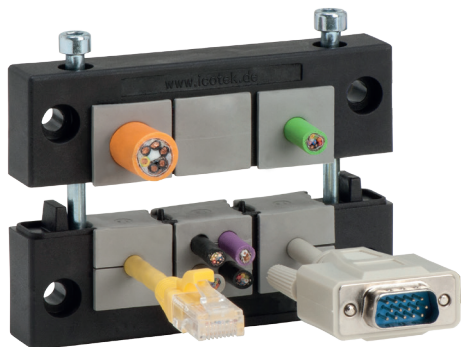
Material	Polyamide (PA)
Flame class	UL-94 Vo, self-extinguishing
Protection class	IP 65, with gasket and correct selection of the cable inserts
Temperature	- 40°C to + 140°C (static)
Properties	Halogen-free, silicone-free
Cut-out dimensions	36 x 112 mm / 46 x 46 mm / p. 146 - 147
Height KEL	17 mm

### Accessories

KT Cable inserts	Page 28 - 32
KEL-SNAP snap frames	Page 20
KEL-EMC Cable collector	Page 110 - 112
KDR Base plates	Page 122 - 123
FP Flanged plates	Page 124 - 129

# KEL 10

## Cable entry frames



Split inserts



V2A  
anti-corrosive

KEL 10 also available with V2A screws.



KEL on request also available with threaded bushings.\*

## Product description

The KEL 10 matches exactly the cut-out dimensions of 10-pole standard industrial connectors.

The split insert matching the cable diameter is placed around the cable and inserted into the cable entry frame.

Either a cut out of 36 mm or 46 mm tall can be chosen depending on the cables being routed. This flexibility is perfect for pre-terminated cables.

## Advantages

- Warranty of pre-terminated cables remains
- Retrofitting and maintenance can be carried out easily and quickly
- High packing density, wide variety of frames and inserts
- Strain relief according DIN EN 50262

## Specification

Material	Polyamide (PA)
Flame class	UL-94 Vo, self-extinguishing
Protection class	IP 54, with gasket and correct selection of the cable inserts
Temperature	- 40°C to + 140°C (static)
Properties	Halogen-free, silicone-free
Cut-out dimensions	36 x 65 mm / Page 146 - 147
Height KEL	17 mm

## Accessories

KT Cable inserts	Page 28 - 32
KEL-SNAP snap frames	Page 20
KEL-EMC Cable collector	Page 110 - 112

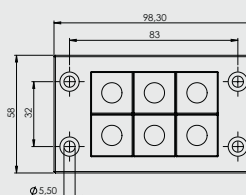
### Description

### Type

### Order No.

### Inserts KT small | large

### PU



KEL 10|6

42216

6|-

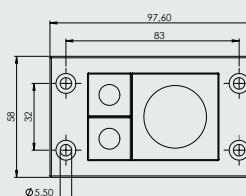
10

KEL 10|6  
with V2A screws

42216.200

6|-

10



KEL 10|3

42212

2|1

10

KEL 10|3  
with V2A screws

42212.200

2|1

10

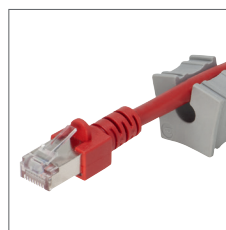
\*Except KEL 183 / KEL JUMBO





## KEL-B

### Cable entry frames



Split inserts



V2A anti-corrosive  
KEL-B also available with V2A screws.



KEL on request also available with threaded bushings.\*

1

## Product description

The KEL-B matches exactly the cut-out dimensions of 46 x 46 mm measuring instruments.

The split insert matching the cable diameter is placed around the cable and inserted into the cable entry frame. For routing cables and conduits up to 34 mm diameter.

## Advantages

- Warranty of pre-terminated cables remains
- Retrofitting and maintenance can be carried out easily and quickly
- Space saving shape
- Small cut-out, high packing density
- Strain relief according DIN EN 50262

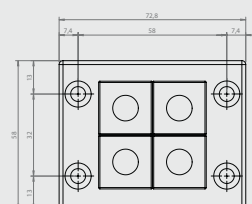
## Specification

Material	Polyamide (PA)
Flame class	UL-94 Vo, self-extinguishing
Protection class	IP 54, with gasket and correct selection of the cable inserts
Temperature	- 40°C to + 140°C (static)
Properties	Halogen-free, silicone-free
Cut-out dimensions	46 x 46 mm / Page 146 - 147
Height KEL	17 mm

## Accessories

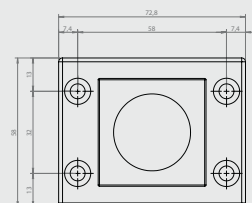
KT Cable inserts	Page 28 - 32
KEL-SNAP snap frames	Page 20
KEL-EMC Cable collector	Page 110 - 112
FP Flanged plates	Page 124 - 129

Description	Type	Order No.	Inserts KT small   large	PU
-------------	------	-----------	-----------------------------	----



KEL-B4	42204	4 -	10
--------	-------	-----	----

KEL-B4 with V2A screws	42204.200	4 -	10
---------------------------	-----------	-----	----



KEL-B1	42206	- 1	10
--------	-------	-----	----

KEL-B1 with V2A screws	42206.200	- 1	10
---------------------------	-----------	-----	----

\*Except KEL 183 / KEL JUMBO



# KEL-ER B

## Cable entry frames



V2A  
anti-corrosive

KEL-ER also available with V2A screws.



KEL-ER on request also available with threaded bushings.



Type	Order No.	Inserts KT small   large	PU	Description
------	-----------	-----------------------------	----	-------------

KEL-ER B4	48204	4 -	10	
KEL-ER B4 with V2A screws	48204.200	4 -	10	
KEL-ER B1	48206	- 1	10	
KEL-ER B1 with V2A screws	48206.200	- 1	10	

### Product description

Split cable entry system for routing pre-terminated cables providing a protection class of IP 65. Routing, sealing and providing strain relief for cable diameters from 3 to 15 mm (KT small) and 16 to 34 mm (KT large). The new cable entry system is easy to install. Cable inserts are placed into compartments and are securely fixed to the frame during assembly.

The KEL-ER B matches exactly the cut-out dimensions of 46 x 46 mm measuring instruments.

### Advantages

- Protection class IP65
- Warranty of pre-terminated cables remains
- Retrofitting and maintenance can be carried out easily and quickly
- Small cut-out, high packing density
- Strain relief according DIN EN 50262
- Vibration proof

### Specification

Material	Polyamide (PA)
Flame class	UL-94 Vo, self-extinguishing
Protection class	IP 65, with gasket and correct selection of the cable inserts
Temperature	- 40°C to + 140°C (static)
Properties	Halogen-free, silicone-free
Cut-out dimensions	36 x 112 mm / 46 x 46 mm / p. 146 - 147
Height KEL	17 mm

### Accessories

KT Cable inserts	Page 28 - 32
KEL-SNAP snap frames	Page 20
KEL-EMC Cable collector	Page 110 - 112
FP Flanged plates	Page 124 - 129