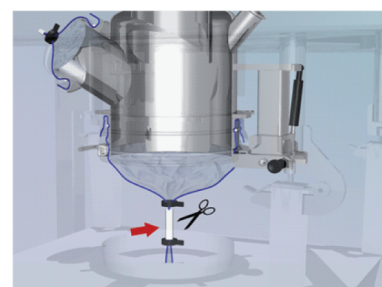
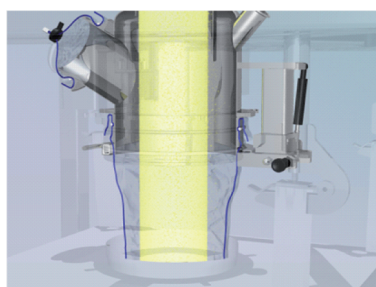
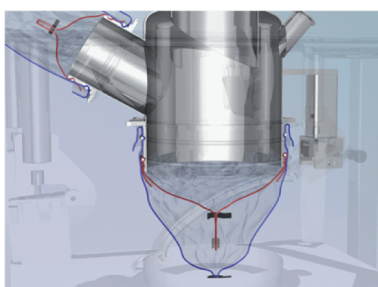


High containment filling of Big Bags with liner.

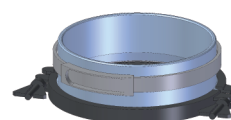
The use of protective liner ensures contamination-free exchange of the Big Bag.

When no Big Bag is connected, the connecting system and the hand-access hole are closed by a protective liner.

The operator and the product are protected against contamination.



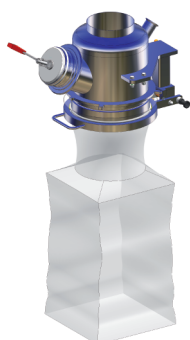
For filling receptacles without inliner (e.g. Container), an adapter with a protective liner is attached to the receptacle.



Adapter for receptacles without inliner.



Big Bag



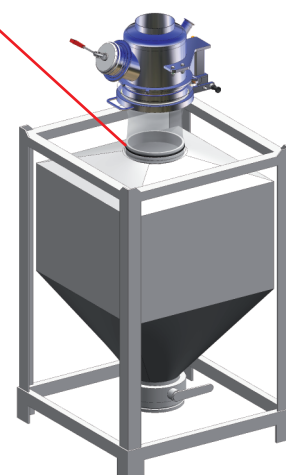
Mini Bag



Small amounts



Drum



Container