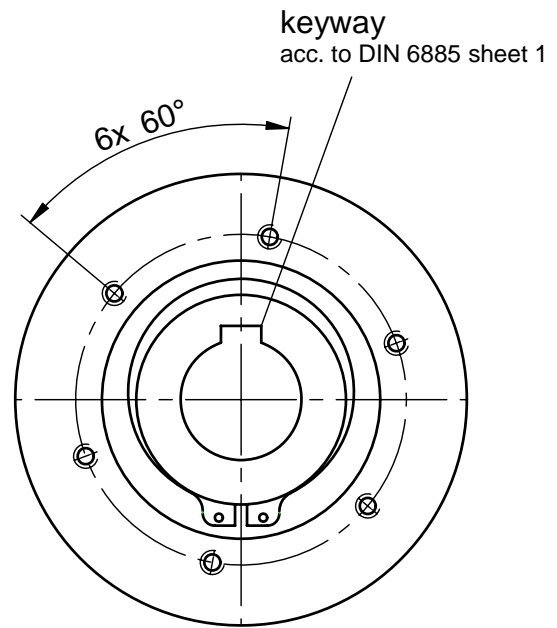
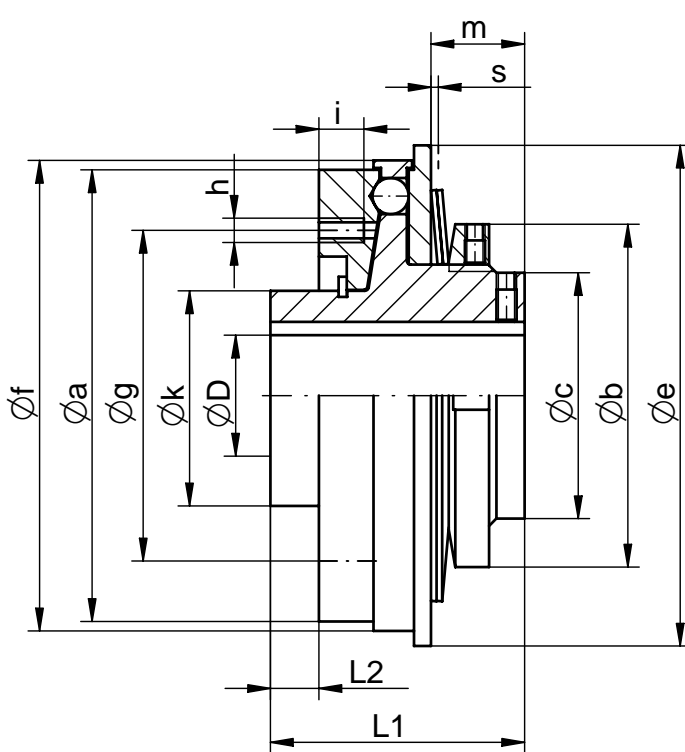


ENEMAC torque limiter type ECR

www.enemac.de

incl bearing for chain wheels (also pulleys, cardan shafts, parts with connection flange). The type ECR is a further development of the type ECG. All parts of the clutch (including the disk springs) are made of STAINLESS STEEL.



STAINLESS STEEL

* the disengagement torque TA is continuously adjustable. Special adjustment on request. Unless otherwise specified by the customer, TA is preset to approx. 70% of TA max.

technical data + dimensions (mm)					we reserves the right to make alterations
ECR	50	100	160	240	
torque range *					
TA max (Nm)	50	100	160	240	
TA min (Nm)	15	40	60	100	
max. rotational speed (min ⁻¹)	3000	3000	2500	2500	
moment of inertia (10 ⁻³ kgm ²)	1,2	1,2	3,9	4,0	
mass (kg)	1,3	1,3	2,3	2,4	
Ø a	82	82	112	112	
Ø b	75	75	75	75	
Ø c	52	52	52	52	
Ø D min	16	16	20	20	
Ø D max	30	30	40	40	
Ø e	90	90	123	123	
Ø f	85	85	116	116	
Ø g	62	62	82	82	
6x h	M6	M6	M8	M8	
i	8	8	12	12	
Ø k h6	40	40	55	55	
L1	55	55	63	63	
L2	10	10	12	12	
m	22	22	22,7	22,7	
s (switching distance)	1,4	1,4	1,7	1,7	

ordering example: ECR 100 D=28G7 with keyway 8P9 TA=50Nm