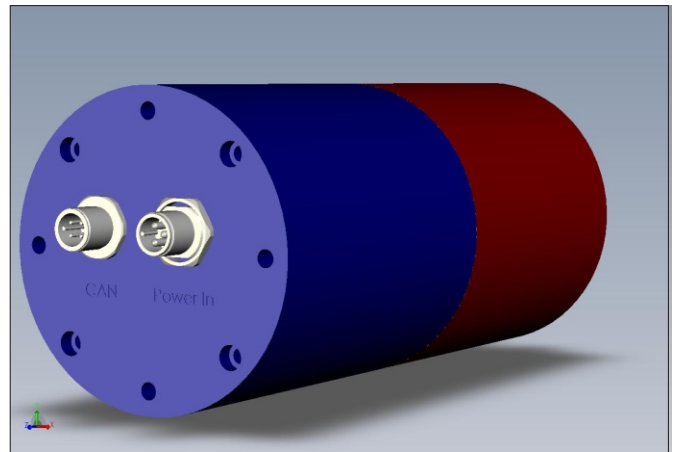


## GENERAL

The INPUD-CAN 120 (Inductive Power and Data Transmission) is a highly integrated module for non-contact transmission of electric energy to supply sensors and actuators and other electric loads on rotating shafts, axles, palettes or attachments. The CAN-Bus information is also transmitted bidirectionally via the air gap between a stationary and remote unit. In doing so INPUD-CAN120 operates as a CAN-Repeater independent of the rotational speed, the transmission happens reliable even under severe environmental conditions (dust, oil, water). The standard version consists of two cylindrical housings whereas the front faces are located opposite each other. Since it works without parts that touch each other mechanically, the INPUD-I/O does not require any maintenance works.



## APPLICATIONS

- ☐ Utility vehicles
- ☐ Mechanical engineering
- ☐ Robotics
- ☐ Contactless connector (Smart Connector)

## PRINCIPLE

INPUD-CAN120 has all its electronics components in the stationary and remote housing integrated. Hence, a very compact design is provided. The power supply at the stationary side is either 12 or 24 V, whereas the corresponding voltage is available at the remote device at up to 120W. The efficiency of the transmission reaches around 95%. A CAN-Bus interface on both units assures utmost flexibility.

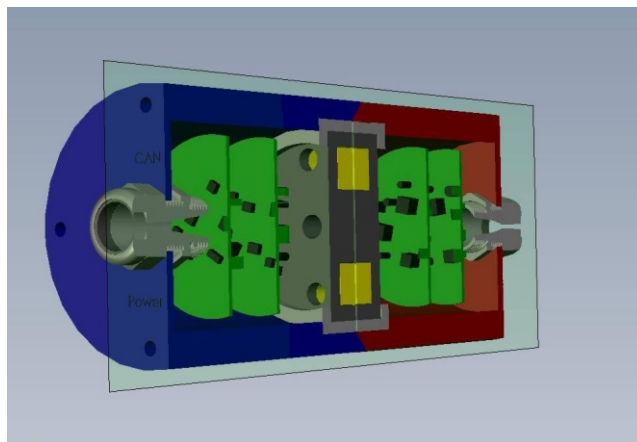
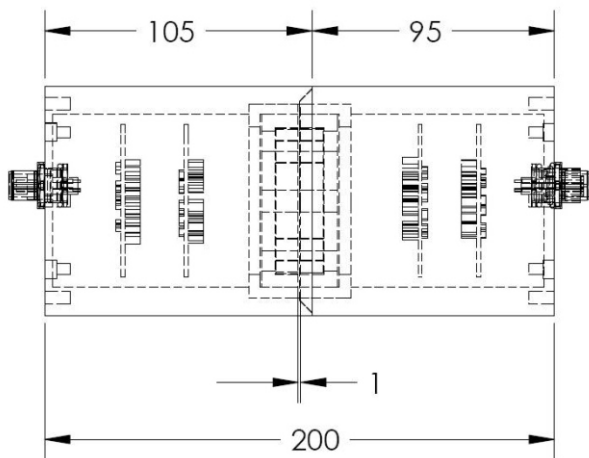
## FEATURES

- ☐ 12/24VDC power supply
- ☐ CAN-Bus repeater up to 250kBit/s
- ☐ Power transmission up to 120W
- ☐ rugged Aluminium housing, optionally with "touch protection"
- ☐ maintenance free, any number of contact durability possible
- ☐ easy installation and operation
- ☐ reliable operation under severe ambient conditions
- ☐ Axial housing with very high efficiency ring to ring shape optionally available
- ☐ Good performance/price ratio

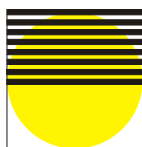
## TECHNICAL DATA

STATIONARY	Power supply	24VDC/6A typ or 12V/12A typ
	Interface	CAN_H, CAN_L
	Baudrate	250kBit/s
	Operating temperature	0..50°C
	Protection class	IP67 (potted housing)
	Connecting/cabling	
	For power and data	circular plug-in connector 6 pin, male
REMOTE	Interface	CAN_H, CAN_L
	Remote power	24VDC/5A or 12V/10A
	Baudrate	250kBit/s
	Operating temperature	0..50°C
	Protection class	IP67 (potted housing)
	Connecting/cabling	
	For power and data	circular plug-in connector 6 pin, female
MECHANICS	Housing	PETP, Aluminium anodized
	Mounting/fixation	4 ea M5 threaded holes, rear side
	Dimensions	ø90mm x 100mm length
		Beside a cylindrical, axial arrangement there is also ring to ring shape available
	Touch protection (if used as a Contactless Connector only)	avoids damage of sensitive energy transmission caps
	Air gap (stationary-remote)	1mm

## DIMENSIONS



Your local representative:



**MESA**

Systemtechnik GmbH  
 August-Borsig-Str. 20  
 D-78467 Konstanz - Germany  
 Telefon: ++49 (0)7531/9371-0  
 Telefax: ++49 (0)7531/9371-71  
 email: [info@mesa-systemtechnik.de](mailto:info@mesa-systemtechnik.de)  
[http:// www.mesa-systemtechnik.de](http://www.mesa-systemtechnik.de)

Technical Data is subject to change  
 Date: -INPUT\_CAN120 0865-