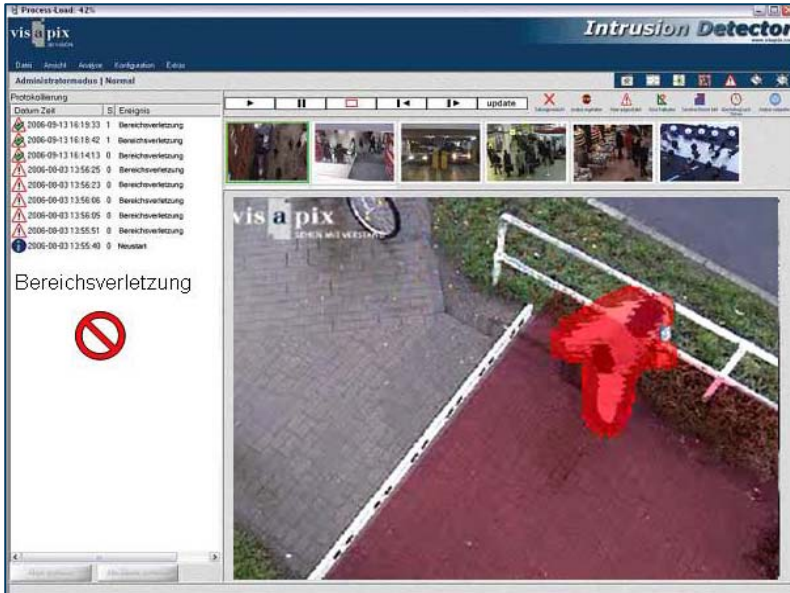


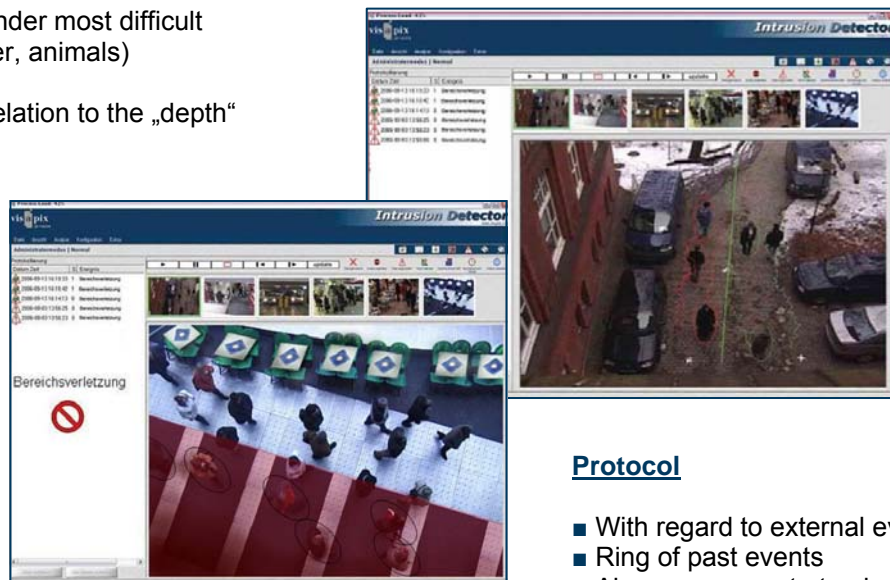
Intrusion Detector



Generates alarm in case of access to sensitive areas

Features

- Sabotage detection in case of occultation, glare or torsion of the camera
- Robust and safe even under most difficult conditions (light, weather, animals)
- Detection with regard to:
 - Size of the object, in relation to the „depth“ of the room
 - Direction
 - Classification
- Areas of detection can be defined freely: Area, lines, electronic fence
- Free connectable events and actions
- Remote-operation
- External communication via interfaces (i.e. xml) and contacts
- „Learns“ about the environment



Areas of detection

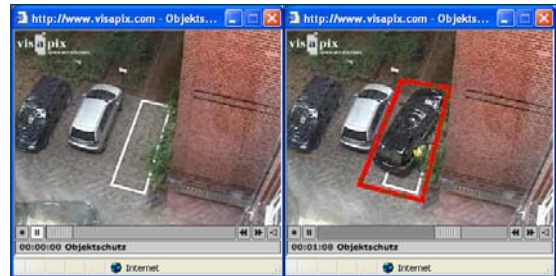
- Electronic Fence
- Electronic Double Fence
- Sensitive Areas
- Barrier Interfaces

Protocol

- With regard to external events
- Ring of past events
- Alarm as separate track
- Export function for single pictures and events



System requirements, scope of delivery and features	
System Software	Microsoft Windows XP Professional Edition SP2
Hardware System	PC (included in delivery: PC min. 3GHz, Intel 1GB RAM, graphic on PCI-e), recommended frame grabber-card upon demand. Screen solution 1280x1024.
Camera Types	FBAS-Analogue via Matrix-Board, IP-Cameras (Vivotek, Mobotix, Sanyo, Sony, Axis)
No. of Cameras per CPU	Up to 8 (QCIF), recommended 4 (CIF)
Camera alignment	Depends on the size of the area of interest and the sensitive resolution
Contrast	Recommended >20 Digital Units between person and background, illumination > 200 Lux
Mounting	> 4,50 m height
Sabotage detection	Signal-loss, De-focussing, partial occultation, rapid changes in light
Readout	Log files, SQL, XML per TCP/IP, external central management, (Alarm-prioritization), I/O, Language, Email, FTP, WLAN
Scope of Delivery People Counter	Pre-installed software on PC, Dongle, installation CD and documentation
Upgrades	Intrusion Detector Intrusion Detector Summary Server



The Intrusion Detector generates alarm when a blocked area is occupied

Technological performance	
Type of camera	Frames/S
Analogue camera	120 Frames/S (CIF)
MJPEG	90 Frames/S
MPEG-4	60 Frames/S

Example of configuration: 4 Video Streams on IP-Basis
1 x 500304 System Intrusion Detector IP 4x
4 x 400006 Installation
Optional:
1 x 300310 Upgrade Intrusion Detector Summary Server

	Intrusion Detector	Upgrade Intrusion Detector Summary Server
Areas of implementation	<ul style="list-style-type: none"> - Readout of alarm per ftp, email, complex central management, remote control per Browser, complex interface XML per TCP/IP, database-export to CSV, individual configuration, log files - Day-/Night-Parameter, Sabotage-detection: a) Torsion, b) blurriness, c) partial occultation, d) brightness - violation of access rights to sensitive areas at an arbitrary amount of lines or polygons, dependant on direction, speed (3D-analysis) 	Admin-module for communicating systems, central analysis