

## MSC C6-SK-8S-T6T2-KIT001 COM-Express Type 6 Starterkit



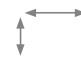
### Description

COM Express™, an open specification of the PICMG (PCI Industrial Computer Manufacturer Group), is a module concept to bring PCI Express and other high speed serial technologies like SATA, USB and digital display interfaces on a COM (Computer On Module).

The MSC C6-SK-8S-T6T2 is a complete Starterkit for the instant operation and evaluation of COM-Express Type 6 modules. The Starterkit contains a COM-Express Type 6 baseboard, a heatsink with fan and two DDR3L SO-DIMM memory modules. The kit does not include a COM-Express MSC C6B-8S module leaving the choice of module variant from MSC's broad portfolio of Type 6 modules with Core processors of the 4th generation to the user.

The baseboard used for the kit is a universal COM-Express Type 6 compact carrier board providing the interface infrastructure for Type 6 modules while offering various PC-type connectors for external access.

The Starterkit can optionally be accompanied by an Embedded Display Port (eDP) Display Kit consisting of a 13.3" TFT in HD resolution (WUXGA, 1920 x 1080) with eDP connection technology and LED backlight for immediate operation with the COM-Express Type 6 Starterkit.

184x140 

### Highlights

- COM-Express Type 6 Baseboard
- Active Heatsink with Fan for COM-Express Type 6 Basic Modules
- 2x 4GB DDR3L SO-DIMM Memory Modules
- Getting Started Manual with Download Links for Drivers, BSP and other Support Tools
- Optional 13.3" TFT Display Kit with Cables
- PCI-Express x4 Slot
- 4x SATA and 4x USB 3.0 Connectors
- 3x DisplayPort and 3x HDMI Connectors
- VGA, DVI, LVDS and eDP Connectors
- HD Audio Codec on the Baseboard
- Gigabit LAN Connector
- Baseboard Size 184 x 140 mm

# Technical Data – MSC C6-SK-8S-T6T2-KIT001

## Module Interface

### COM Express module connector

Socket for COM Express module Type 6 supports Compact and Basic module sizes

The COM Express connectors on the rear side of the baseboard MSC C6-AD-T6T2 allows placing the baseboard into the module slot of the COM-Express Type 2 baseboard MSC CX-MB-EVA2 thus acting as a Type 6 to Type 2 adapter board

## Bus Interfaces

### PCI Express™

One PCI Express x4 slot

### LPC

LPC bus on 10 pin header; usable for optional POST code display

## Storage Interfaces

### SATA

4x SATA

## Standard Interfaces

### USB

4x USB 3.0 supported (USB 2.0 compliant)

## Display Interfaces

### VGA

Standard VGA monitor interface (Dsub 15pin)

### DVI

1x DVI connector

### DisplayPort

3x DisplayPort connectors

### HDMI

3x HDMI connectors

### Embedded DisplayPort

1x 30-pin eDP connector

### LVDS

1x 30-pin J1LI connector

## Miscellaneous

### Feature connector

Carrying SMBus, I<sup>2</sup>C bus, power button, reset button, beeper, HD LED and other system signals

### Fan

4-pin fan connector; PWM controlled from COM Express module

## Network Interface

### Ethernet

RJ45 connector for LAN on COMe module, 10/100/1000 Mb/s supported, depending on COM Express module used, two status LED's integrated

## Audio Interface

HD audio codec routed to 6x audio jacks and SPDIF on chinch Connectors

## Battery

CR 2032 type RTC battery (3V, socketed)

## Power Supply

### Power

Standard 20pin ATX power connector with additional 4-pin ATX12V connector

Additional power jack for 12V-only supply

## Environment

### Ambient Temperature

0° ... 60°C (operating)

-25° ... 85°C (storage)

### Humidity

20 ... 80% (operating, non-condensing)

5 ... 95% (storage, non-condensing)

## Mechanical

### Dimensions

184mm x 140mm

## Memory Modules

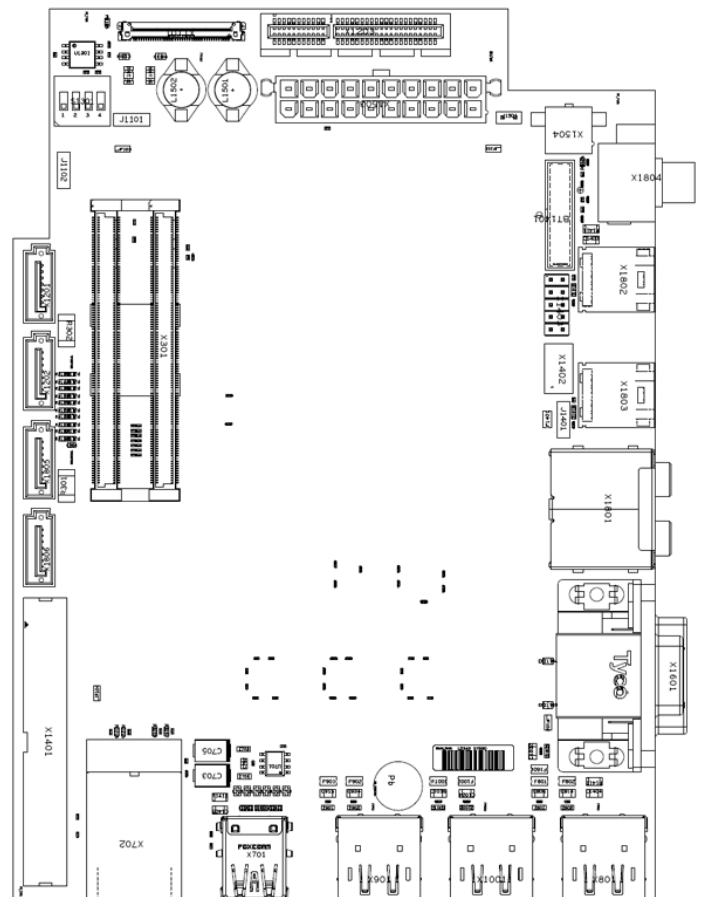
### SO-DIMMs

2x HMT351S6CFR8C-PBN0 (4GB DDR3L DRAM PC1333)

## Heatsink

### Active Heatsink with Fan

MSC CXB-8S-01 HSF-001



## Order Reference – MSC C6-SK-8S-T6T2-KIT001

Order Number	Description	Reference
46417	COM-Express Type 6 Starterkit for Intel fourth generation core processors consisting of a Type 6 baseboard, the active heatsink with fan for the C6B-8S Type 6 module, and two 4GB DDR3L SO-DIMM memory modules. Please order separately the COM-Express C6B-8S module of your choice	MSC C6-SK-8S-T6T2-KIT001

## Suitable COM-Express Type 6 Modules

Order Number	Description	Reference	Cat. <sup>1)</sup>
45230	Intel® Core™ i7-4700EQ, 47/37W TDP, GbE, TPM 1.2, Type 6	MSC C6B-8S-008	PV
45228	Intel® Core™ i5-4400E, 37W TDP, GbE, TPM 1.2, Type 6	MSC C6B-8S-005	PV
45232	Intel® Core™ i5-4402E, 25W TDP, GbE, TPM 1.2, Type 6	MSC C6B-8S-012	OR
45226	Intel® Core™ i3-4100E, 37W TDP, GbE, TPM 1.2, Type 6	MSC C6B-8S-004	PV
45224	Intel® Core™ i3-4102E, 25W TDP, GbE, TPM 1.2, Type 6	MSC C6B-8S-003	OR
	<sup>1)</sup> PV = Preferred variant; OR = on Request (in OEM quantities only)		

## Accessories

Order Number	Description	Reference
14565	Embedded DisplayPort Starterkit Includes 13.3" WUXGA TFT with LED backlight and complete cable kit for immediate operation. Can be delivered with 30-lead or 40-lead embedded DisplayPort cable connection between TFT and computer board – please advise	MSC C6-SK-eDP-KIT001

### Disclaimer

Copyright © 2012 MSC. All rights reserved. Although great care has been taken in preparing this material, MSC cannot be held responsible for any errors or omissions. All information contained is subject to change without notice. All hardware, software or third party product names used are trade names and/or trademarks of the respective manufacturer.

### Corporate Offices

**MSC Vertriebs GmbH**, Industriestraße 16, 76297 Stutensee, Tel. +49 7249 910 – 0, Fax +49 7249 7993 0  
**MSC Vertriebs GmbH, Design Center München-Neufahrn**, Zeppeinstr. 1A, 85375 Neufahrn, Tel. +49 8165 906 – 100, E-mail: boards@msc-ge.com,  
**Technical Support COM**: Tel. +49 8165 906 – 200, E-mail: [support.boards@msc-ge.com](mailto:support.boards@msc-ge.com), Internet: [www.msc-ge.com/support-boards](http://www.msc-ge.com/support-boards)

### Sales Offices Germany

**München-Dornach** · Tel. +49 89 945532 – 0 · **Berlin** · Tel. +49 30 720089 – 0 · **Hamburg** · Tel. +49 4106 7764 – 0 · **Hannover** · Tel. +49 511 616847 – 0 ·  
**Braunschweig** · Tel. +49 5341 2999 – 0 · **Düsseldorf** · Tel. +49 211 92593 – 0 · **Aachen** · Tel. +49 2408 709 – 0 · **Koblenz** · Tel. +49 2630 96239 – 11 ·  
**Rodgau** · Tel. +49 6106 26769 – 0 · **Wiesbaden** · Tel. +49 611 97320 – 0 · **Frankenthal** · Tel. +49 6233 344 – 0 · **Stuttgart** · Tel. +49 711 78336 – 0 ·  
**Freiburg** · Tel. +49 761 8819 – 819 · **Nürnberg** · Tel. +49 911 43970 – 0 · **Jena** · Tel. +49 3641 6825 – 0 · **Stutensee** · Tel. +49 7249 910-173

### Sales Offices Europe

**MSC Vertriebs GmbH · Leobersdorf** · Tel. +43 2236 205066 – 0 · **Velden** · Tel. +43 4274 23222 – 17 · **MSC Schweiz AG · Biel/Bienne** · Tel. +41 32 366 8565 ·  
**Montreux** · Tel. +41 21 965 3500 · **Rotkreuz** · Tel. +41 41 785 8200 · **Volketswil** · Tel. +41 43 355 33 66 ·  
**MSC Iberia S.L. · Barcelona** · Tel. +34 931 505 505 · **Madrid** · Tel. +34 91 72169 – 51 ·  
**MSC France · Paris** · Tel. +33 1 45128230 · **Strasbourg** · Tel. +33 3 88 651843 · **Lyon** · Tel. +33 4 72 756020 ·  
**MSC Italia Srl** · Tel. +39 039 63089-1 · **MSC Nederland BV** · Tel. +31 78 6920 – 150 · **MSC Belgium Office** · Tel. +32 2 452 6451 ·  
**MSC (UK) LTD. · Brighton** · Tel. +44 1273 622446 · **Weybridge** · Tel. +44 1932 268990 · **Milton Keynes** · Tel. +44 1908 263999 ·  
**MSC (Scotland) LTD.** · Tel. +44 1506 460555 · **MSC Representative (DK) MK Nordic ApS** · Tel. +45 24 252745 ·  
**MSC-Vertriebs-CZ s.r.o. · Blansko** · Tel. +420 516 411494 – 15, **Prague** · Tel. +420 251 261 130 ·  
**MSC-Vertriebs-SK s.r.o. · Zilina** · Tel. +421 41 5001243 · **MSC Budapest Kft.** · Tel. +36 1250 90 – 40 ·  
**MSC Polska Sp. z o.o.** · Tel. +48 323 3054 – 50 · **MSC-Mibatron s.r.l. · Bucharest** · Tel. +40 31 1023466 · Tel. +40 21 2302530 ·  
**MSC Vertriebs GmbH · Istanbul** · Tel. +90 216 411 2333

