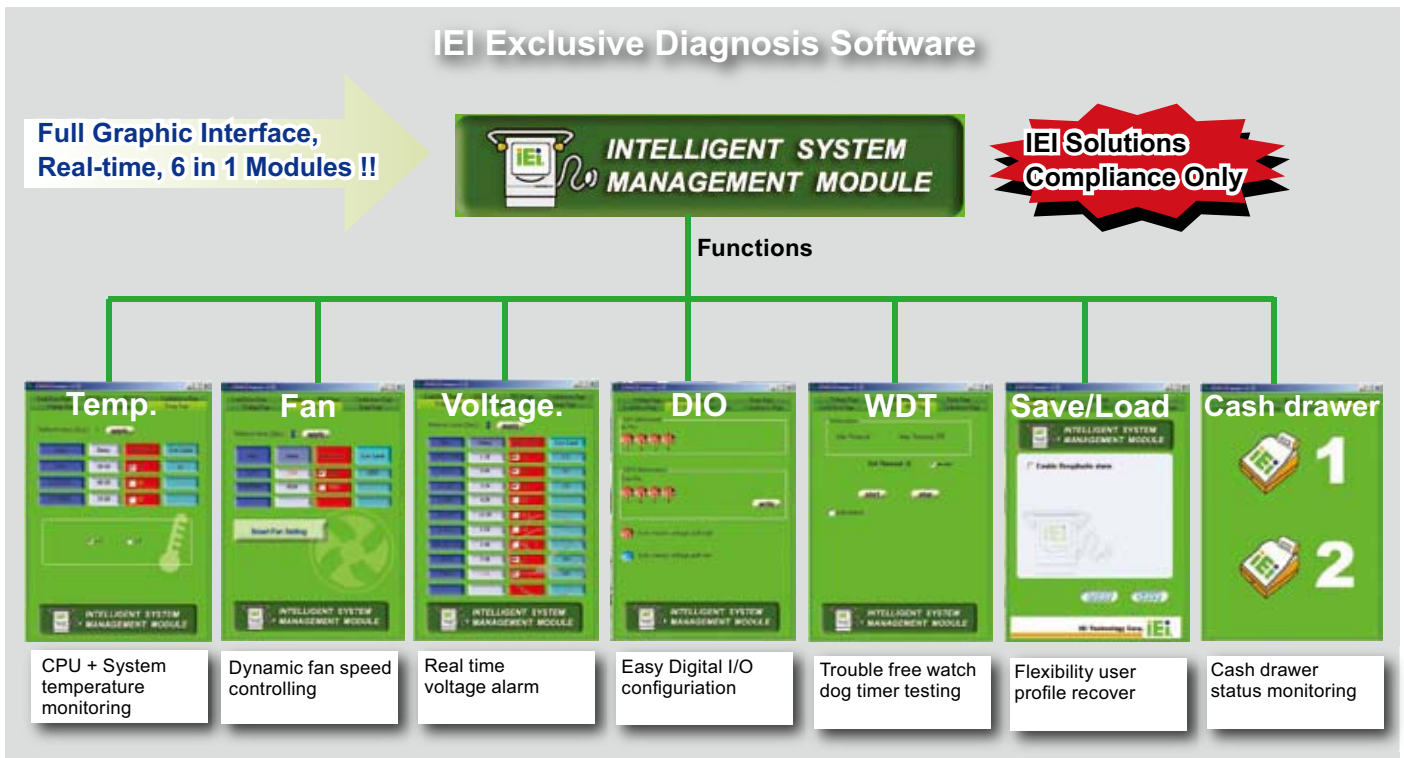


# IEI Intelligent System Management Module

## What is the IEI Intelligent System Management Module (iSMM) ?

IEI iSMM is a system health supervision API which utilizes sensor chips on IEI motherboards to track system and CPU temperatures, voltages, cooling fan speed., WDT and Digital I/O set up status . By quickly capturing and reporting system health data, users can prevent disasters such as system instability or damage.

# iSMM



### Features

- External and on-chip voltages data feedback
- CPU and system temperature data feedback
- Cooling fan speed data feedback
- Cooling fan speed controlled by PWM/On-Off/ Automatic Mode
- Warning signals by beeper and sound effect
- WDT Test
- Programmable Digital I/O
- System health configurations save and load

### Available Models

Model Name	Test result	Voltage	Fan	Smart Fan	Temp.	DIO	WDT	Alarm
IMBA-3600AM2	V	V	V	V	V	N/A	V	V
POS-9153	V	V	V	V	V	V	V	V
KINO-9652	V	V	V	N/A	V	V	V	V
NOVA-9452	V	V	V	N/A	V	V	V	V
NANO-8523	V	V	V	N/A	N/A	V	V	V
StealthTouch-M	V	V	V	V	V	V	V	V
AFLMB-LX800	V	V	N/A	N/A	N/A	N/A	V	V
AFLMB-CX700	V	N/A	N/A	N/A	N/A	V	V	N/A
AFLMB-690TAM2	V	V	V	V	V	V	V	V
AFLMB-915GM	V	V	V	V	V	V	V	V

### Advantages

Know that your system is running within safe limits !!  
Prevent disasters such as system instability or damage.

### Architecture

