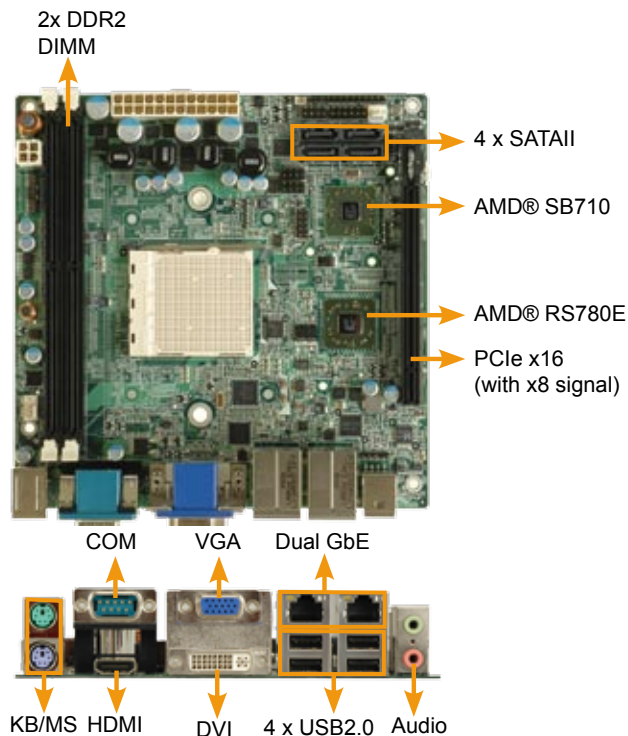


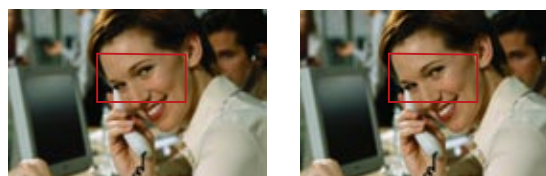
KINO-780AM2

Mini-ITX SBC with Socket AM2 for AMD® Althon™64, Althon™64 X2, Sempron CPU, VGA/DVI/HDMI, SPDIF-out, Dual PCIe GbE, USB2.0, SATAII



HDMI (High-Definition Multimedia Interface)

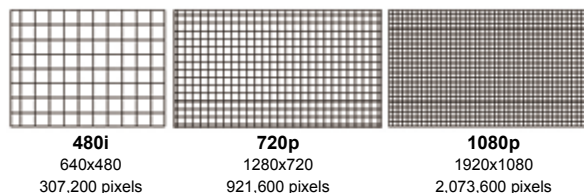
The High-Definition Multimedia Interface (HDMI) is a compact audio/video interface for transmitting uncompressed digital data. It represents a digital alternative to consumer analog standards such as Radio Frequency (RF) coaxial cable, composite video, S-Video, SCART, component video, D-Terminal, and VGA. HDMI connects digital audio/video sources such as set-top boxes, Blu-ray Disc players, personal computers, video game consoles, and AV receivers to compatible digital audio devices, computer monitors, and digital televisions.



720p
1,280x720 pixels

1080p
1,920x1,080 pixels

KINO-780AM2 Support 1080p resolution which equates to 1,920x1,080 pixels



Specifications

- ◆ CPU
AMD® Socket AM2 Althon™64, Althon™64 X2, Sempron CPU with 2600MHz Hyper Transport 3.0 support
- ◆ System Chipset
AMD® RS780E + SB710
- ◆ BIOS
AMI BIOS
- ◆ Memory
Two 240-pin 667/800 DDR2 dual-channel SDRAM DIMMs supported (system max. 4GB)
- ◆ Ethernet
Dual Realtek PCIe RTL8111CP GbE Chipsets
- ◆ I/O Interface
8 x USB2.0 (4 on rear IO, 4 by pin header)
4 x SATAII
1 x RS-232
1 x PS2 for KB/MS
- ◆ Graphic
ATI Radeon HD3200 Graphic core for DX10 support
- ◆ Display Output
VGA integrated in the AMD® RS780E (Max. resolution 2560x1600@32bpp)
Support HDMI resolution up to 1080p integrated in the AMD® RS780E
Dual link DVI-D integrated in the AMD® RS780E (Resolution 2560x1600)
- ◆ Expansion
1x PCIe x16 (with x8 signal)
- ◆ Digital I/O
8-bit digital I/O, 4-bit input/ 4-bit output
- ◆ Super IO
Fintek F71859
- ◆ Audio
Realtek ALC888 HD Codec
- ◆ Watchdog Timer
Software Programmable support 1~255 sec. System reset
- ◆ Power Supply
ATX power supply
- ◆ Power Consumption
5V@4.8A, 12V@0.22A, Vcore_12V@12.69A, 3.3V@0.54A (AMD® Phenom X4 9950 CPU)
- ◆ Temperature
Operation: 0°C ~ 60°C (32°F ~ 140°F)
- ◆ Humidity
Operation: 5% ~95% non-condensing
- ◆ Dimension
170mm x 170mm
- ◆ Weight
GW: 1000g / NW: 450 g



Features

1. AMD® RS780E integrated Radeon HD3200 graphic core for UVD, MPEG2, and H.264/AVC Full HD Decoder
2. DDR2 667/800MHz memory dual-channel DDR2 DIMMs support up to 4GB
3. Dual Display support by VGA + DVI-D/HDMI + VGA
4. AMD® Socket AM2 Althon™64, Althon™64 X2, Sempron CPU with 2600MHz Hyper Transport 3.0 support
5. ATI Radeon HD3200 Graphic core for DX10 support

Packing List

1 x KINO-780AM2 single board computer
4 x SATA cable (P/N: 32000-062800-RS)
1 x I/O shielding (P/N: 45014-0028C0-00-RS)
1 x Mini Jumper Pack
1 x Utility CD
1 x QIG(Quick Installation Guide)

Ordering Information

Part No.	Description
KINO-780AM2-R10	Mini-ITX SBC with Socket AM2 for AMD® Althon™64, Althon™64 X2, Sempron CPU, VGA/DVI/HDMI, SPDIF-out, Dual PCIe GbE, USB2.0, SATAII
CB-USB02-RS	Dual USB cable
32100-088600-RS	SATA Power cable
CF-AM2-RS	Socket AM2 CPU cooler