

# AFOLUX KIOSK Application Series



## AFL-315A KIOSK Panel PC



### Your Best Choice for KIOSK Solution

One Solution Fits All !  
High Performance Core™ 2 Duo Platform

#### Compact and highly integrated design

- Time and labor cost saving for LCD panel and system integration
- Minimize space for all applications
- Modular design eases maintenance effort
- Clean, appealing appearance suits any atmosphere
- Easy integration to all Kiosk enclosures

#### Versatile mounting options

IP 64 industrial grade compliance allows system operation in public sectors

**KIOSK Ready System**

### Enhanced Features



Built-in 2.0 mega-pixel webcam with auto focus function



Four standard RS-232 connector with selectable RI/+5V/+12V and eight USB 2.0 ports



Triggers a system reset if the main program, due to some fault condition



System health supervision API to track the system status



Built-in stereo saves the expense to set up the external speakers; Line out speakers enhance the effectiveness to attract customers attention



### Clean, Attractive Design



1  
Application Server Platform

2  
Single Board Computer

3  
IBX Series POS PC

4  
AFOLUX POS Panel PC

5  
Video Capture Card

6  
KAMIO RISC

7  
IOVU Open HMI

8  
VITO Universal Controller

9  
DINO BLADE

10  
LCD Product Series

11  
Embedded System

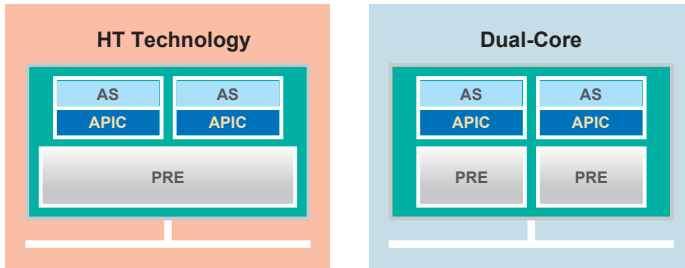
12  
Industrial Computer Chassis

13  
Power Supply

14  
Peripherals

### Higher Performance, More Energy-Efficiency

The AFL-315A integrated with an Intel® Core™2 Duo platform provides higher performance and ensures your system can do more at once without slowing down.



AS = Architecture State (registers, flags, timestamp counter, etc.)  
 APIC = Advanced Programmable Interrupt Controller  
 PER = Processor Execution Resources (execution units, instruction decode, etc.)



Process	CPU Number	clock speed	FSB	L2 Cache	TDP
Core 2 Duo	E6400	2.13G	1066	2MB	65W
	E6320	1.86G		4MB	
	E6300	1.86G		2MB	
	E4400	2G		2MB	
Pentium® Dual-Core	E4300	1.8G	800	2MB	65W
	E2160	1.8G		1MB	
Celeron®	440	2.00G	800	512K	35W
	430	1.8G			
	420	1.6G			
Pentium® Ex	965	3.73G	1066	2X2M	130W
	955	3.46G			130W
Pentium® D	960	3.6G	800		130W
	950	3.4G			130W

### Strong Multimedia Feature

AFL-315A provides outstanding image quality and high performance for immersive multimedia play. Users will experience revolutionary performance, unbelievable system responsiveness.

#### • Dual Display



Built in DVI and VGA video out to extend your content



MDM-W201S wide screen display



#### • Built-in USB 2MP Camera and Speakers

The AFL-315A built-in CMOS camera module is specially designed and fabricated for KIOSK applications.

The camera module combines a UXGA CMOS sensor with integrated lens to deliver high performance images quality. It has a USB2.0 High Speed interface, and has the capability of transferring uncompressed data in UXGA mode at 15 fps and VGA mode at 30 fps.

- UXGA resolution image sensor
- Video resolution: 1600x1200, 1280x1024, 1024x768, 800x600, 640x480, 352x288, 320x240, 176x144, 160x120.
- Frame rate: 1600x1200@ 15 fps max, 640x480@ 30fps max.
- Max. image transfer rate: 2M @ MJPG 15fps; 1.3M @ MJPG 15fps; VGA @ MJPG 30fps
- Video format: YUY2' MJPG' I240
- Auto white balance
- Auto exposure
- Auto gain control
- Auto Focus@ 10cm ~ infinity..
- High speed USB2.0 interface
- GA compliant



2MP AF Camera



#### HR Employees/Job Applications Kiosk



Desk top KIOSK for employee fill out online forms and interview with managers



IP-64 Speaker



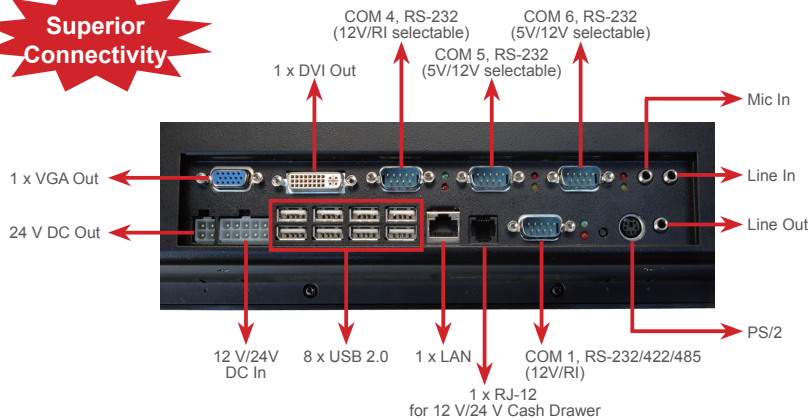
#### Adjustable Stand (STAND-B19)



- 1 Application Server Platform
- 2 Single Board Computer
- 3 IBX Series POS PC
- 4 AFOLUX POS Panel PC
- 5 Video Capture Card
- 6 KAMIO RISC
- 7 IOVU Open HMI
- 8 VITO Universal Controller
- 9 DINO BLADE
- 10 LCD Product Series
- 11 Embedded System
- 12 Industrial Computer Chassis
- 13 Power Supply
- 14 Peripherals



Rich Connectivity



1 Application Server Platform

2 Single Board Computer

3 IBX Series POS PC

4 AFOLUX POS Panel PC

5 Video Capture Card

6 KAMIO RISC

7 IOVU Open HMI

8 VITO Universal Controller

9 DINO BLADE

10 LCD Product Series

11 Embedded System

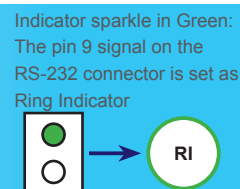
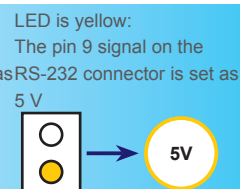
12 Industrial Computer Chassis

13 Power Supply

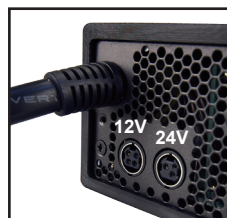
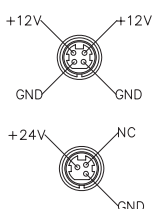
14 Peripherals

(1) Four RS-232 with selectable 5V/12V/RI

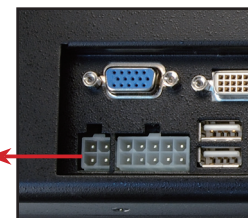
LED indicator for identifying power status selected by jumper (Red: 12V/ Yellow: 5V/ Green: RI) RI: Ring Indicator



(2) Power supply provides additional 12V and 24V power for peripheral power requirement

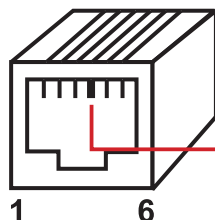
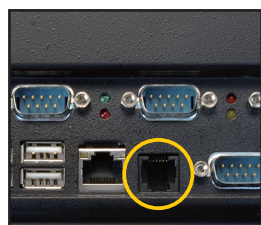


Extra 24 V power connector for peripheral power requirement



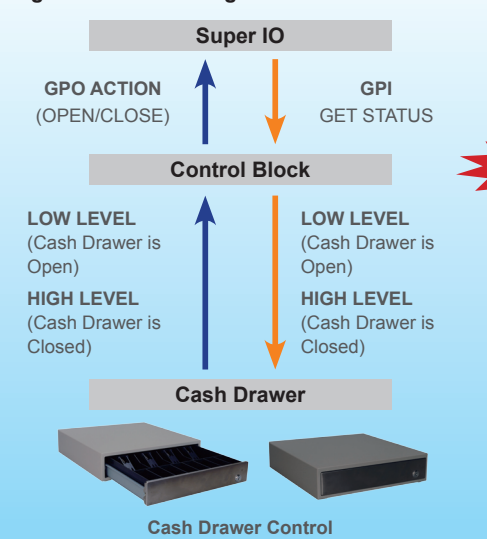
(3) Cash drawer port via RJ-12 with 12 V/24 V power

Equipped with a digital I/O RJ-12 12 V/24 V port that provides extension for peripherals such as a cash drawer device.



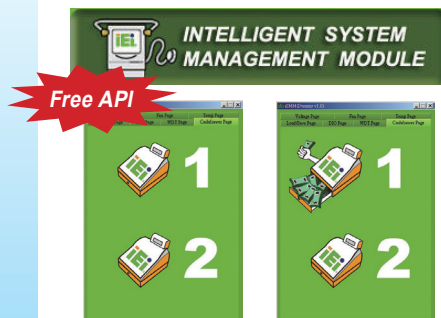
Pin	Assignment
1	Ground
2	CASH_1 (Digital Out Programmable)
3	Digital IN
4	+12 V / +24 V (Jumper Selection)
5	NC
6	Ground

Digital I/O control diagram



IEI ISMM cash drawer status monitoring

IEI also provides a quick and easy tool (ISMM API) to develop specific application for your system.



Self-development system program

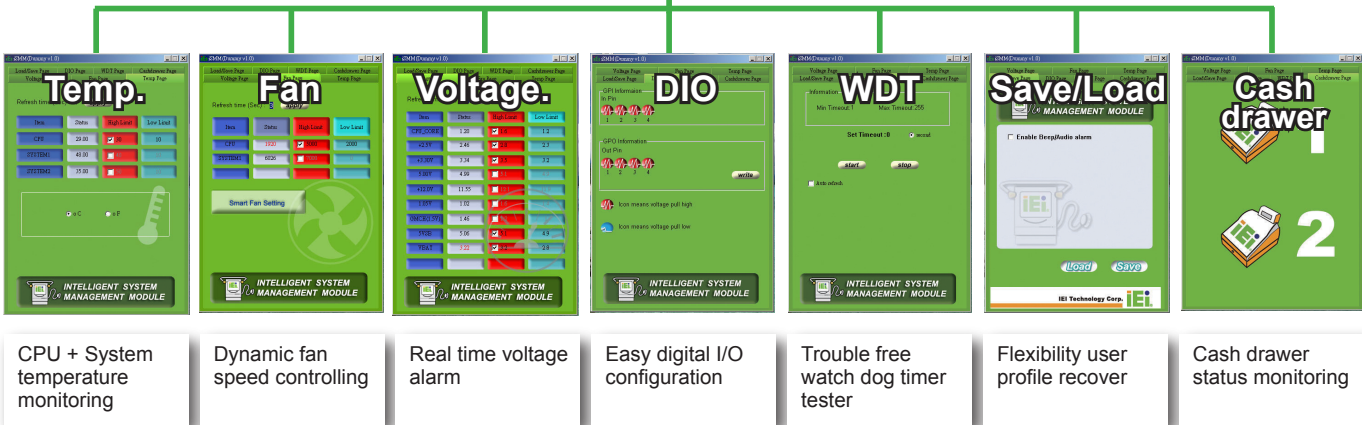
## IEI Intelligent System Management Module (ISMM)

### IEI Intelligent System Management Module (ISMM)

AFL-315A is equipped with the patented IEI system management module that tracks system and CPU temperature, voltages and cooling fan speeds etc. The system management module quickly captures system health parameters and provides feedback to system users to ensure the users can prevent system crashes due to system instabilities and damage.



#### Functions



## Unlimited Connection Bluetooth and Wi-Fi



A preinstalled Bluetooth module communicates with a wide range of electronic products from PDAs, cellular phones and printers, to barcode readers.



The integrated PIFA antenna on the AFL-315A ensures an uninterrupted wireless connection. PIFA type antennas can receive high-quality, uniform signals in any location from all directions without any signal degradation or impedance and are the most efficient ..



## Easy Access Drive Bay

Easy access storage drive bay design for quick storage installation without any trouble.



Easy HDD and CF Card Installation



## Flexible AT/ATX Power Mode

Flexible AT/ATX power mode easily selected by jumper settings allows you to select the most suitable power mode for your unique requirements.

### • AT Mode

Automatic system boot when power connected



### • ATX Mode

Remote control the system via network





**IQ Mount Support**

The AFL-315A VESA mounting standard(100 mm x 100 mm) and can be mounted virtually anywhere. The AFL-315A can be mounted on a wall, panel, stand or arm. These flexible mounting options ensure the system can be installed in the best location for your needs.

**Install Anywhere~**

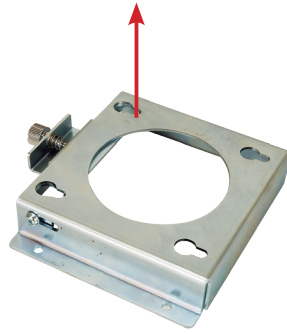
**Wall Mount**

Requires no cut out in the wall surface. It mounts directly on the existing wall or desk.



Food ordering Kiosk on the wall enhance the efficiency

Fastening the retention screw to secure the PPC



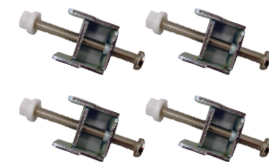
Wall Mount Kit

**Panel Mount**

Requires a cut out in the wall surface. With four clamps to tighten the screws that pass through the panel mounting clamps



Easy installed in the KIOSK enclosure



Panel Mount Kit

**Stand**

Adjustable stand kit allow users to work in comfort, reducing neck and back strain from improperly positioned screens and easily movable to anywhere.

STAND-A19 supports up to 7.5Kg  
STAND-B19 supports up to 7.2Kg

**Comfortable Stand**



STAND-B19

Portrait/Landscape

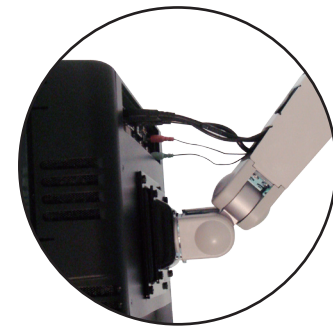
Height Adjustment(13 cm)

Right/Left Pan (270°)

Forward & Back Tilt(+25°/-5°)

**ARM**

Adjustable monitor arms could be easily mounted on the wall, ceiling, and desk.



Easy cable organize !!

**Easy Stand**



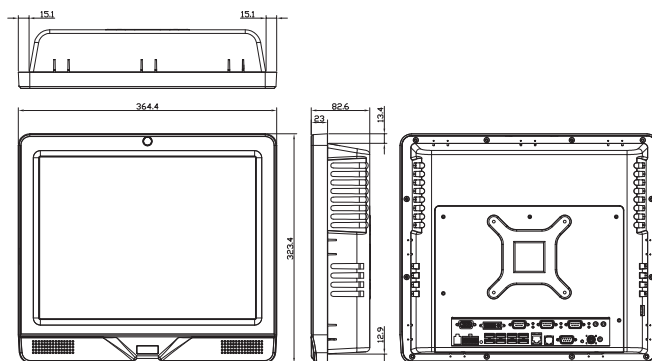
STAND-A08

STAND-A12

STAND-A19

Forward & Back Tilt

**Dimensions (Unit: mm)**



1 Application Server Platform

2 Single Board Computer

3 IBX Series POS PC

4 AFOLUX POS Panel PC

5 Video Capture Card

6 KAMIO RISC

7 IOVU Open HMI

8 VITO Universal Controller

9 DINO BLADE

10 LCD Product Series

11 Embedded System

12 Industrial Computer Chassis

13 Power Supply

14 Peripherals

### Specifications



**AFL-315AB-945  
(Black color)**



**AFL-315AW-945  
(White color)**

<b>LCD Size</b>	15"	<b>Brightness (cd/m<sup>2</sup>)</b>	350
<b>Max Resolution</b>	1024 x 768	<b>SSD</b>	CF Type II
<b>Contrast Ratio</b>	700:1	<b>Watchdog Timer</b>	Software Programmable supports 1~255 sec. System reset
<b>LCD Color</b>	262K	<b>Audio</b>	AMP 1.5W+AMP 1.5W (Built-in Stereo Speakers)
<b>Pixel Pitch (mm)</b>	0.297(H) x 0.297(V)	<b>Camera</b>	2 Mega pixel with Autofocus
<b>Viewing Angle (H-V)</b>	140(H) / 125(V)	<b>Expansion</b>	1 x PCIe mini card 1 x Mini PCI Interface (Wireless LAN Module ) 1 x Bluetooth module (USB interface, Bluetooth V2.0)
<b>Backlight MTBF</b>	50,000 hrs	<b>HDD Drive Bay</b>	1 x 3.5" SATA HDD bay or 1 x 2.5" SATA HDD bay
<b>SBC Model</b>	AFLMB-9454-R10	<b>Construction Material</b>	ABS + PC Plastic front frame
<b>CPU</b>	Intel® Dual Core Desktop Processor(E2160) 1.8GHz or others	<b>Mounting</b>	Panel, Wall, Stand and Arm (VESA 100mm x 100mm)
<b>Chipset</b>	Intel® 945G	<b>Front Panel Color</b>	Black or White
<b>Memory</b>	DDR2 1GB support up to 4GB	<b>Dimension (WxHxD) (mm)</b>	363 x 322 x 80
<b>I/O Ports and Switches</b>	1 x 12V/24V DC Input Jack	<b>Operation Temperature (°C)</b>	0°C~45°C
	1 x PS/2	<b>Storage Temperature (°C)</b>	-20°C~80°C
	3 x RS-232 COM port	<b>Net Weight</b>	6.8 kg
	1 x RS-232/422/485 COM port	<b>IP Level (front panel)</b>	IP 64
	1 x RJ-12, 12V/24V Cash Drawer Port	<b>EMC</b>	CE, FCC, CCC
	1 x RJ-45 for GbE LAN	<b>Safety</b>	UL, CB
	8 x USB 2.0	<b>Touch Screen</b>	Resistive Type 5-Wire (touch controller IC is on board)
	1 x Power Switch	<b>Power Adapter</b>	ACE-D825AH: 252W
	1 x Reset Button		Input: 90VAC~264VAC @ 50/60Hz
	1 x DVI port		Output:12VDC at 15A, 24VDC at 3A
1 x VGA port	<b>Power Consumption</b>	102 W	
1 x Line in, 1 x Line out, 1 x MIC in			
1 x 24V DC Output Jack			

### Options

Options	Model name
<b>Panel mount kit</b>	AFLPK-315A
<b>Wall mount kit</b>	AFLWK-19
<b>Stand</b>	STAND-A19/STAND-B19
	STAND-210-RS
<b>ARM</b>	ARM-11-RS/ARM-31-RS

### Packing List

1 x Power Cable
1 x Utility CD
1 x Screw Kit
1 x Touch Pen
1 x 252 W PSU

### Ordering Information

<b>AFL-315AB-945-E2160/WT-R/1GB/160G</b>	15" 350cd/m <sup>2</sup> XGA panel PC w/ Dual-Core E2160 1.8GHz CPU,1GB DDR2 RAM, 160G SATA HDD,802.11 b/g wireless module, touch screen, 2MP Camera, Bluetooth, black color
<b>AFL-315AW-945-E2160/WT-R/1GB/160G</b>	15" 350cd/m <sup>2</sup> XGA panel PC w/ Dual-Core E2160 1.8GHz CPU,1GB DDR2 RAM, 160G SATA HDD,802.11 b/g wireless module, touch screen, 2MP Camera, Bluetooth, white color

If you need other configuration, please contact us.

1  
Application  
Server  
Platform

2  
Single  
Board  
Computer

3  
IBX Series  
POS PC

4  
AFOLUX  
POS  
Panel PC

5  
Video  
Capture  
Card

6  
KAMIO  
RISC

7  
IOVU  
Open HMI

8  
VITO  
Universal  
Controller

9  
DINO  
BLADE

10  
LCD  
Product  
Series

11  
Embedded  
System

12  
Industrial  
Computer  
Chassis

13  
Power  
Supply

14  
Peripherals