



AFO LUX

5.6" / 5.7" Mini Fanless Touch Panel PC

► AFOLUX All-in-One Panel PC



AFL-056A QVGA
Mini Fanless Touch Panel PC

LED Backlight



AFL-057A VGA
Mini Fanless Touch Panel PC

The AFL-056A-LX and AFL-057A-LX are small form factor Panel PCs which are highly reliable because they incorporate a low power CPU that does not need a cooling fan and comes with versatile functions built in.

Compact

5.6" and 5.7" industrial-grade Panel PC for small screen requirements such as Human Machine Interfaces (HMI) and building automation.
Only 0.8 kgs!

Fanless

An on-board 500 MHz AMD Geode™ LX 800 CPU and 1GB (maximum) of DDR RAM ensures low power requirements. Aluminum die casting design housing replaces the fan as it helps the AFL PPC dissipate heat.
No cooling fan required!

Simple

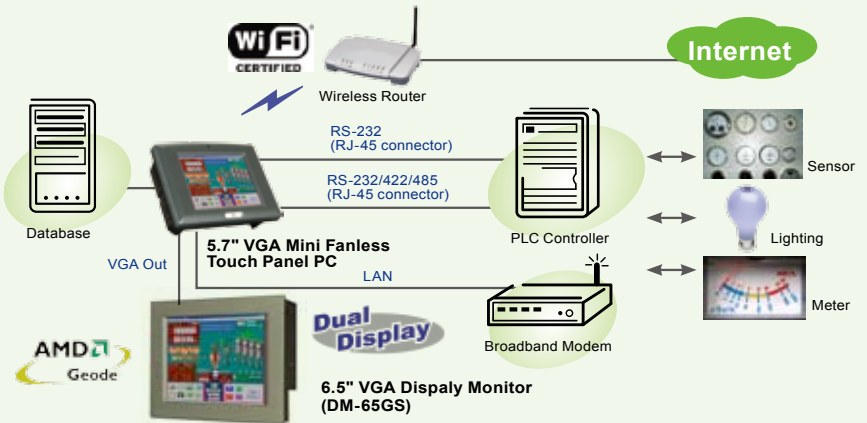
With streamlined mechanical layout, and no more abundant functions built in.
All-in-one easy to use!

Rich IO Support



Various Applications *Industrial Automation*

Great I/O expansion support and open platform that can run third party software and can also be converted into an open HMI solutions with the best flexibility.



► Fanless Design

AFOLUX PPC back cover is designed with cast aluminum chassis which is ideal for demanding environments, they offer high strength and rigidity along with good corrosion resistance and heat dissipation.

Benefits

- Less down time
- Extended operational lives as they are not exposed to overheating problems caused by fan failures
- Reduce maintenance costs

Aluminum Die Casting Design

Good Heat Dissipation!



► Dual Display

5.7" VGA AFL PPC integrated with VGA out port allows dual mirror display applications. (AFL-056A-LX VGA out port for motherboard service only)

► QVGA and VGA Supported

5.6" QVGA Mini Panel PC

5.6" QVGA (320 x 234) AFOLUX touch PPC offers larger image size ideal for replacing the HMI buttons for easy controlling.

5.7" VGA Mini Panel PC

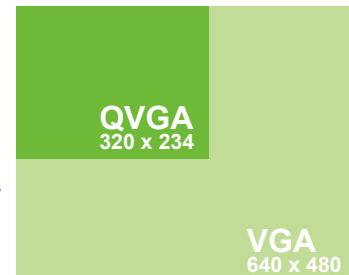
5.7" VGA (640 x 480) AFOLUX touch PPC with higher resolution offers more detail.



Better Control Unit!

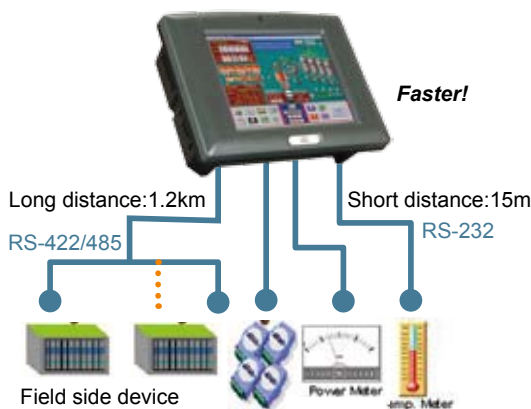


Better Graphs Legibility!



QVGA (320 x 234) refers maximum resolution

► Selectable RS-232/422/485



Faster!

Specifications	RS-232	RS-422	RS-485
Mode of Operation	Single ended	Differential	Differential
Total Number of Drivers and Receivers on One Line (One driver active at a time for RS485 networks)	1 Driver 1 Receiver	1 Driver 10 Receiver	32 Driver 32 Receiver
Maximum Cable Length	50 FT.	4000 FT.	4000 FT.
Maximum Data Rate (40ft. - 4000ft. for RS422/RS485)	20kb/s	10Mb/s-100Kb/s	10Mb/s-100Kb/s
Maximum Driver Output Voltage	+/-25V	-0.25V to +6V	-7V to +12V
Driver Output Signal Level (Loaded Min.)	Loaded	+/-5V to +/-15V	+/-2.0V
Driver Output Signal Level (Unloaded Max)	Unloaded	+/-25V	+/-6V
Driver Load Impedance (Ohms)		3k to 7k	100
Max. Driver Current in High Z State	Power On	N/A	+/-100uA
Max. Driver Current in High Z State	Power Off	+/-6mA @ +/-2v	+/-100uA
Slew Rate (Max.)		30V/uS	N/A
Receiver Input Voltage Range		+/-15V	-10V to +10V
Receiver Input Sensitivity		+/-3V	+/-200mV
Receiver Input Resistance (Ohms), (1 Standard Load for RS485)		3k to 7k	4k min. >=12k



Selectable RS-232/422/485 by easy setting

Various Applications *Bluetooth Vehicle PC*



► Bluetooth Support

A preinstalled Bluetooth module communicates with a wide range of electronic products from PDAs, cellular phones and printers, to barcode readers.



► High Speed WiFi (802.11b/g) Networking

The integrated PIFA antenna on the AFOLUX ensures an uninterrupted wireless connection. PIFA type antennas can receive high-quality, uniform signals in any location from all directions without any signal degradation or impedance and are the most efficient.



	Transmission Bandwidth	Transmission Distance
802.11b	11Mbps	About 40-50 meters
802.11g	54Mbps	About 40-50 meters

► Revealing a previously unseen world of vivid colors



5.7" VGA LED-backlight Panel PC delivers better image

AFL-057A-LX is the first panel PC of its compact size to incorporate an LED backlight - being better than previous CCFL illumination for the viewing and editing of pictures.



AFL-057A-LX

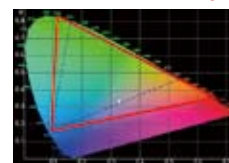
With Wider Gamut

Vivid Image!

Enhancement of picture image quality on LCD screen

- Wider color gamut
- More even screen illumination
- Longer display life
- Low temperature operation and greater power efficiency

Color Gamut Comparison



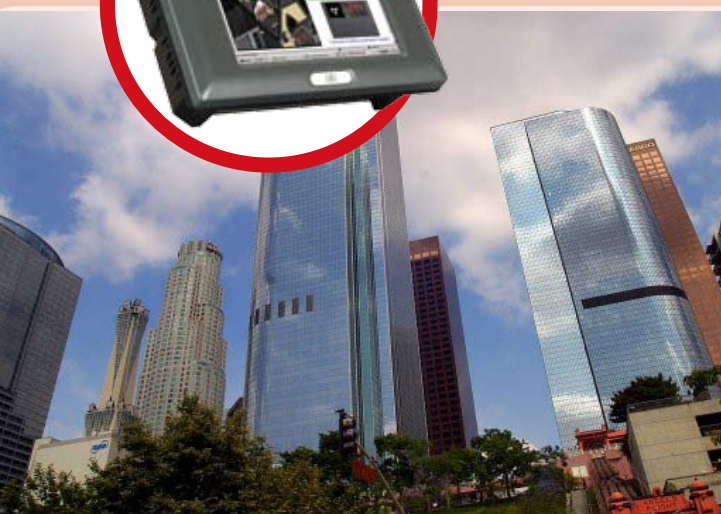
— LED
- - - Normal CCFL

Thus LED backlight for LCD enables seeing the color on LCD screen as we see the colors in nature.

5.7" VGA Mini Fanless Touch Panel PC

Various Applications

Building Automation/Access Control System



Power Management

► Watchdog Timer

IEI AFOLUX panel PCs provide the value-added Watchdog Timer function. Watchdog Timer ensures that if the system does not report completion of its information saving task within assigned period of time, the operating system will reboot with or without the information

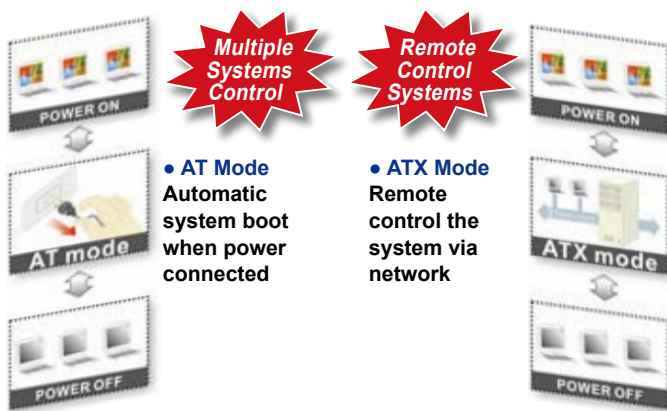


► Selectable AT/ATX Power Mode

Flexible AT/ATX power mode easily selected by switch in front of the rear allows you to select the most suitable power mode for your unique requirements.

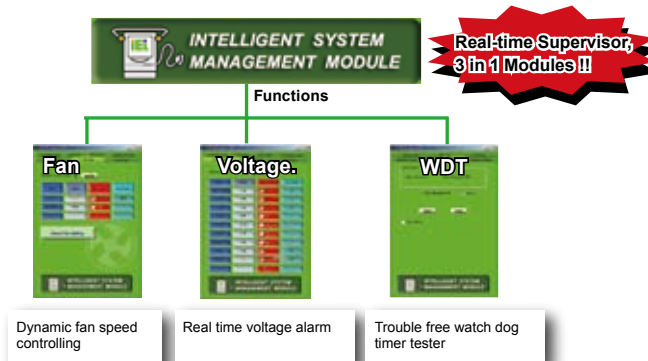


Convenient AT/ATX power mode switch in the rear!



► IEI Intelligent System Management Module (ISMM)

AFOLUX panel PC equipped with IEI patent system management module could track system and voltages, cooling fan speed, etc. Quickly capturing data and providing health data feedback to the end user to help prevent disasters and system instabilities caused by damage.





Specifications

Model	AFL-056A-LX	AFL-057A-LX
LCD Size	5.6"	5.7"
Max Resolution	320 * 234	640 * 480
Brightness (cd/m ²)	350	400
Contrast Ratio	400:1	300:1
LCD Color	262K	262K
Pixel Pitch (mm)	0.118(H) x 0.362(V)	0.06(H) x 0.18(V)
Viewing Angle (H-V)	100/60	140/100
Backlight MTBF	30000 hrs	50000 hrs
SBC Model	AFLMB-LX2-800	AFLMB-LX2-800
CPU	AMD Geode™ LX 800 (500MHz)	AMD Geode™ LX 800 (500MHz)
Chipset	AMD Geode™ LX 800 + AMD Geode™ CS5536	AMD Geode™ LX 800 + AMD Geode™ CS5536
RAM	Supports one 1GB (maximum) 333MHz or 400MHz DDR SO-DIMM	Supports one 1GB (maximum) 333MHz or 400MHz SO-DIMM
I/O Ports and Switches	1 x RS-232 COM port (RJ-45) 1 x RS-232/422/485 COM port (RJ-45) 1 x RJ-45 for 10/100Mbps 2 x USB 2.0	1 x RS-232 COM port (RJ-45) 1 x RS-232/422/485 COM port (RJ-45) 1 x RJ-45 for 10/100Mbps 2 x USB 2.0
SSD	CF Type II	CF Type II
Watchdog Timer	Software programmable supports 1~255 sec. System reset	
Audio	AMP 1.5W + 1.5W	AMP 1.5W+1.5W
Expansion	1 x Wireless LAN Module (USB Interface) 1 x bluetooth module ((USB Interface))	1 x Wireless LAN Module (USB Interface) 1 x bluetooth module ((USB Interface))
HDD Drive Bay	N/A	N/A
Optional GPRS Module (support GSM 850,EGSM 900,DCS 1800 & PCS 1900)	N/A	N/A
Construction Material	ABS + PC Plastic front frame Aluminum die casting body	ABS + PC Plastic front frame Aluminum die casting body
LED Function	1 x Power ON/OFF LED on front panel	1 x Power ON/OFF LED on front panel
Mounting	Panel, Wall, Stand and Arm (VESA 75mm x 75mm)	Panel, Wall, Stand and Arm (VESA 75mm x 75mm)
Front Panel Color	Gray 7539U	Gray 7539U
Dimensions (WxHxD) (mm)	180 x 135 x 55	180 x 135 x 55
Operation Temperature (°C)	0°C~50°C	0°C~50°C
Storage Temperature (°C)	-20°C~60°C	-20°C~60°C
Net Weight	0.8 Kg	0.8 Kg
IP Level(front panel)	IP 64	IP 64
EMC	CE, FCC, CCC	CE, FCC, CCC
Safety	UL, CB	UL, CB
Touch Screen	Resistive Type 4-Wire (touch controller IC is on board)	Resistive Type 4-Wire (touch controller IC is on board)
Power Adapter	P/N: 63000-FSP0361AD101C-RS Power: 36W Input: 90VAC~264VAC @ 50/60Hz Output:12VDC	P/N: 63000-FSP0361AD101C-RS Power: 36W Input: 90VAC~264VAC @ 50/60Hz Output:12VDC
Power Requirement	12VDC	12VDC
Power Consumption	17W	15W

Optional 60W DC/DC Converter Module Specs (P/N:IDD-930160-KIT)

Input Voltage	9~30VDC
Input Current	Max. 8A at 6VDC
Output	12V@5A
Max. Total Output	60W
Performance Characteristics	Noise & ±Ripple:<320mV, Line Regulation: <120mV , Load Regulation: <120mV
Transient toggle rate	250Hz (50% duty ratio)
Transient current step	From 0% to 50% and 50% to 100% of max current
Efficiency	typ. 95% (Vin=12V, 80% of full load)
Dimensions	42mm x 103mm x 31mm
Mounting Kit	12mm x 80mm
Cable Length	180cm
Operating Temperature	-40°C~85°C



Ordering Information

AFL-056A-LX/WT-R/256MB	5.6", 350cd/m ² QVGA fanless panel PC with AMD Geode™ LX 800 CPU, 256MB DDR RAM, 802.11 b/g wireless module, Bluetooth module and touch screen, RoHS
AFL-056A-LX/WT-R/512MB	5.6", 350cd/m ² QVGA fanless panel PC with AMD Geode™ LX 800 CPU, 512MB DDR RAM, 802.11 b/g wireless module, Bluetooth module and touch screen, RoHS
AFL-057A-LX/WT-R/256MB	5.7", 400cd/m ² VGA fanless panel PC with AMD Geode™ LX 800 CPU, 256MB DDR RAM, 802.11 b/g wireless module, Bluetooth module and touch screen, RoHS
AFL-057A-LX/WT-R/512MB	5.7", 400cd/m ² VGA fanless panel PC with AMD Geode™ LX 800 CPU, 512MB DDR RAM, 802.11 b/g wireless module, Bluetooth module and touch screen, RoHS

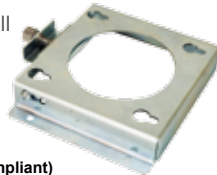
Industrial Grade

5.6" QVGA / 5.7" VGA Mini Fanless Touch Panel PC

AFL-056/057A-LX can be installed into all kinds of work environments and applications. It can be wall mounted, panel mounted, or simply placed on a desktop with an optional stand based on different application needs. Compliant with IP64 standards. This industrial-grade quality ensures this panel computer can withstand more severe environmental extremes, such as dusk, water, temperature and vibration.

► Wall Mount

Requires no cut out in the wall surface. It mounts directly on the existing wall or desk.



AFLWK-12
(VESA 75 Compliant)



► Easy Stand

Adjustable stand kit allow users to work in comfort, reducing neck and back strain from improperly positioned screens and easily movable to anywhere.



STAND-A08



Foreward and Back Tilt (+5°/-15°)

► Panel Mount

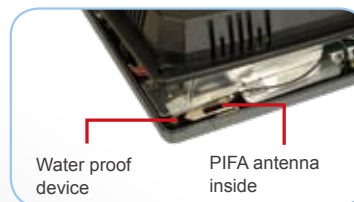
Requires a cut out in the wall surface. With four clamps to tighten the screws that pass through the panel mounting clamps



AFLPK-08

► IP 64 dustproof and waterproof front panel

The AFOLUX front panel is IP 64 compliant. IP 64 compliance guarantees the front panel is dustproof and water-proof. The AFOLUX front panel can withstand any industrial environment where dust and drizzle is encountered.



Water proof device

PIFA antenna inside



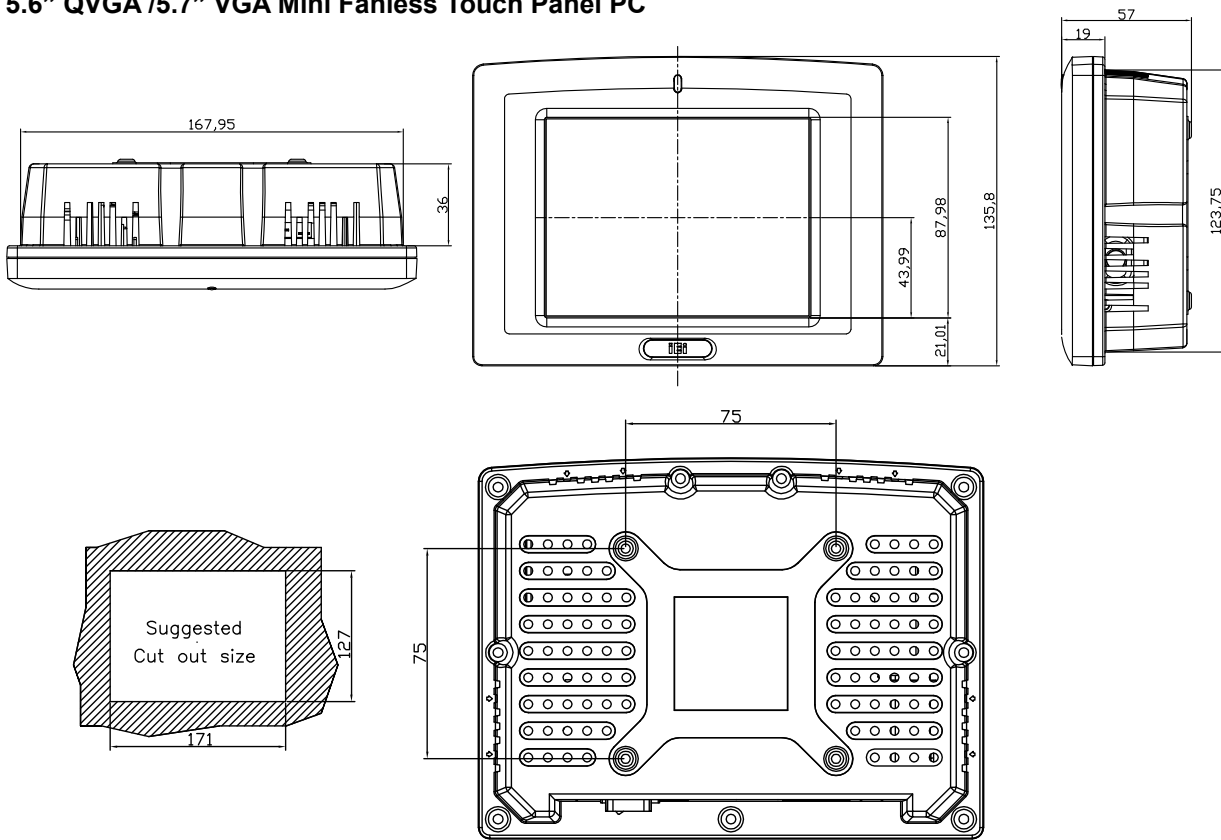
► Rugged design

The AFOLUX is directly mounted internally to a metal main frame rather than a fragile plastic cover. In addition, the AFOLUX case is made from ABS/PC (Acrylonitrile Butadiene Styrene/Polycarbonate Alloy), which improves the stiffness over conventional material and makes the system more solid and durable.



► Dimensions

5.6" QVGA /5.7" VGA Mini Fanless Touch Panel PC



► Embedded OS Supports

IEI provides optional pre-installed Windows® XP Embedded, Windows® CE 5.0 or Windows® Embedded CE 6.0 turnkey solutions tailored for the AFOLUX series. These turnkey solutions have one CompactFlash® memory card Windows® pre-installed. A Windows® software license is included, and one CD that contains all related SDK (Software Development Kit) information and user manuals.



128 MB



Include:

- Windows® CE OS image with license
- Thin Client turnkey solutions
- SDK

1 GB



Include:

- Windows® XPE OS image with license
- Thin Client turnkey solutions

► Options

Model	AFL-056A-LX	AFL-057A-LX
Panel mounting kit		AFLPK-08
Wall mounting kit		AFLWK-12
Stand		STAND-A08
DC to DC converter module		IDD-930160-KIT
OS: Win CE 5.0	AFLCF-056-LX-CE	AFLCF-057-LX-CE
OS: Win CE 6.0	AFLCF-056-LX-CE-CE060	AFLCF-057-LX-CE-CE060
OS: Win XPE	N/A	AFLCF-057-LX-XPE

AFO LUX



AFL-056A



AFL-07A



AFL-10A



AFL-15A



AFL-315A



Headquarters

威強工業電腦股份有限公司 IEI Technology Corp.

No. 29, Jhongsing Rd., Sijhih City, Taipei County, 221, Taiwan
TEL : +886-2-86916798 FAX : +886-2-66160028
sales@ieiworld.com www.ieiworld.com

America

IEI Technology USA Corp.

168 University Parkway, Pomona, CA 91768
TEL : +1-909-595-2819 FAX : +1-909-595-2816
sales@usa.ieiworld.com www.usa.ieiworld.com

China

威強工業電腦 IEI Technology SH Corp.

上海市闵行区宜山路 1728 号 3 楼.
3F No. 1728 Yi-Shan Road, Min-Hang, ShangHai, China
TEL : +86-21-3462-7799 FAX : +86-21-3462-7798,3462-7797
sales@ieiworld.com.cn www.ieiworld.com.cn